

Private Mail Bag (NAP0351)  
Nadi Airport, Fiji  
Ph: +679 6724888  
Fax: +679 6724050  
Email: [climate@met.gov.fj](mailto:climate@met.gov.fj)  
Also online at:  
<http://www.met.gov.fj>

Issued: May 7, 2026  
Next Issue: June 5, 2026

Since : August 1980\*

Volume 47 : Issue 4

## 1. IN BRIEF

As we have now transitioned from Wet Season to Dry Season, variable rainfall was observed in April, with rainfall ranging from *below average* to *well above average*. There were enhanced rainfall mostly over the Western Division, as TC Vaianu passed to the west of the country, bringing about strong to gale force winds with heavy rainfall, resulting in flooding, damages, as well as road blockages in certain areas. (Figures 14a – 14t).

Overall, out of the 25 rainfall stations available during the compilation of this bulletin, 3 reported *well above average*, 6 *above average*, 10 *average*, and 6 *below average* rainfall. (Table 2, Figures 1-5).

The highest monthly rainfall of 590.8mm was recorded at Monasavu, followed by 483.0mm at Navua, 451.5mm at Lomaivuna, 428.5mm at Nasinu, 425.1mm at Viwa and 408.7mm at Nacocolevu.

On temperatures, the month's warmest day-time temperature of 35.0°C was observed at Momi on the 24<sup>th</sup>, followed by Yasawa-i-Rara with 34.8°C on the 2<sup>nd</sup>, Levuka with 34.5°C on the 26<sup>th</sup>, and Nacocolevu,

Nabouwalu, Labasa Airfield and Rarawai Mill (Ba), all with 34.0°C on the 5<sup>th</sup>, 30<sup>th</sup>, 3<sup>rd</sup> and 1<sup>st</sup>, respectively.

The month's lowest night-time temperature of 15.7°C was recorded at Nadarivatu on the 11<sup>th</sup>, followed by Monasavu with 17.3°C on the 11<sup>th</sup>, Matei Airfield with 20.1°C on the 14<sup>th</sup> and Penang Mill with 20.3°C on the 10<sup>th</sup>.

Southeasterly winds prevailed at Nadi Airport, Savusavu Airfield and Matei Airfield, while Nausori Airport recorded predominantly easterly winds. (Figure 8).

Sea surface temperature anomaly observations were generally *above normal* across the Fiji Waters, during the month (Figure 9).

*Above normal* sea level anomalies persist across the Fiji Group in April (Figure 11).

Troughs of low-pressure systems caused flash flooding across the Central Division during the beginning and middle of the month (Figures 12a-d).

## 2. WEATHER PATTERNS

April 2026 was characterized by a highly active synoptic pattern across the southwest Pacific, with Fiji frequently influenced by troughs and low-pressure systems. During the first week, a broad trough lay across the region, with embedded low-pressure center to the northwest of Fiji. This led to unsettled weather, with increasing cloud, showers, and thunderstorms over parts of the group.

The main weather feature during the period was Tropical Cyclone Vaianu, which developed northwest of Fiji and affected the group from the 5<sup>th</sup> to 9<sup>th</sup> while remaining west of the country. Its passage brought stronger winds, heavy rain, and very rough to high seas, particularly over the western and southern parts of Fiji, resulting in heavy rain, strong wind and marine warnings being issued.

Conditions improved from around the 10<sup>th</sup> to 13<sup>th</sup> as a ridge of high pressure brought more stable weather, lighter winds and reduced rainfall. From mid to late

month, troughs continued to pass near Fiji, particularly around 18<sup>th</sup> to 23<sup>rd</sup> April, maintaining occasional cloudiness, showers, spells of rain, and thunderstorms, mainly over the windward parts of the group .

Towards the end of the month, the subtropical ridge strengthened to the south of Fiji, with higher pressure building across the region. This resulted in a return to a more typical southeast trade wind pattern, with generally more settled conditions and showers mostly confined to windward and maritime areas. During the more stable periods, some center reported maximum temperatures exceeding 32°C, reflecting increased solar heating under clearer skies.

Rotuma was frequently influenced by troughs during the month, bringing cloud, showers and isolated thunderstorms. From the 5<sup>th</sup> to 8<sup>th</sup>, TC Vaianu resulted in heavier showers, fresh to strong winds and rough seas. A passing troughs brought further showers later in the month.

### 3. RAINFALL

As April marks the final month of the wet season, variable rainfall was observed with rainfall ranging from *below average* to *well above average*. The highest rainfall totals were mainly concentrated over parts of the Western Division, with Nadi Airport, Nacocolevu and Viwa recorded *well above average* rainfall, while Koronivia, Navua, Monasavu, Lautoka Mill, Matei Airfield and Matuku recorded *above average rainfall*. *Below average* rainfall were observed at Udu Point, Savusavu Airfield, Vanuabalavu, Vunisea, Ono-i-Lau and Tavua.

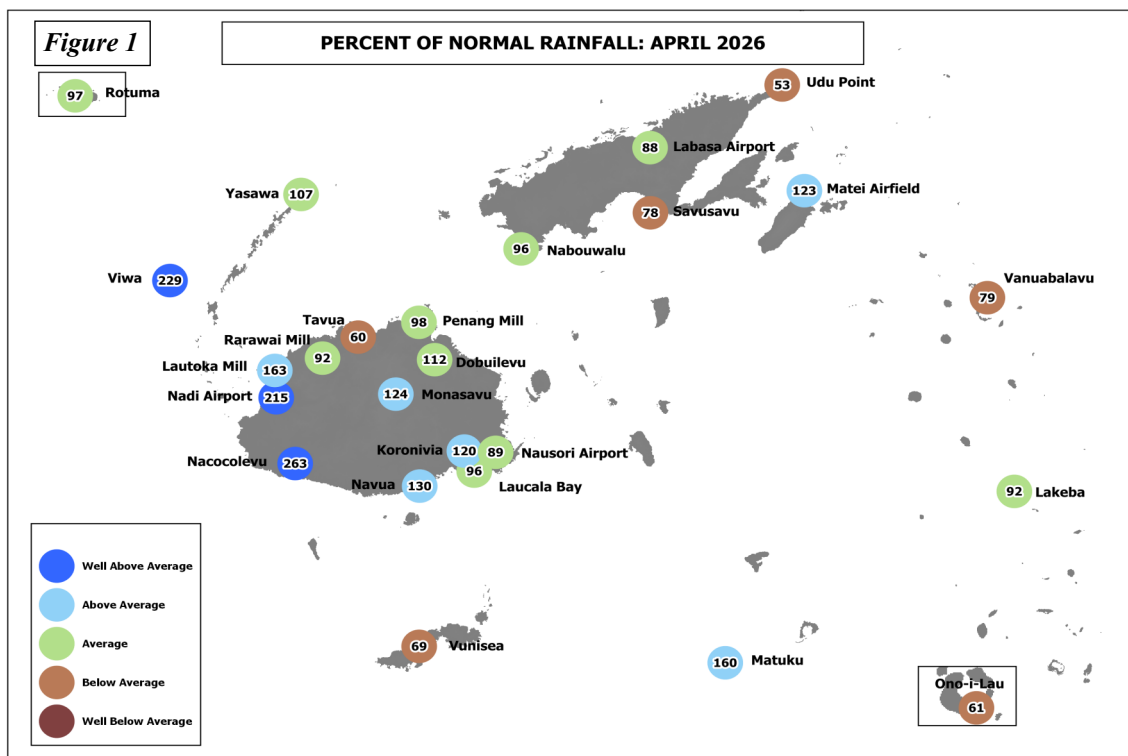
Out of the 25 stations available during the compilation of this bulletin, 3 stations reported *well above average*, 6 *above average*, 10 *average*, and 6 *below average* rainfall. (Table 2, Figures 1-5).

The highest monthly rainfall of 590.8mm was recorded at Monasavu, followed by 483.0mm at Navua, 451.5mm at Lomaivuna, 428.5mm at Nasinu, 425.1mm at Viwa, 408.7mm at Nacocolevu, 403.6mm at Nadi Airport, 394.5mm at Dobuilevu, 386.7mm at Koronivia and 374.5mm at Nadarivatu. On the other hand, Ono-i-Lau recorded the month's lowest total monthly rainfall of 109.2mm, followed by Udu Point with 154.7mm, Vanuabalavu with 158.6mm, Savusavu Airfield with 162.1mm, Tavua with 168.5mm, Yasawa-i-Rara with 177.1mm, Levuka with 188.0mm and Rarawai Mill (Ba) with 196.2mm.

The highest 24-hour rainfall were mainly recorded during the first week of the month, particularly during the passage of TC Vaianu. The highest 24-hour rainfall of 240.0mm was recorded at Lautoka Mill on the 7<sup>th</sup>, followed by Nacocolevu with 210.0mm on the 7<sup>th</sup>, Monasavu with 180.0mm on the 7<sup>th</sup>, Nadi Airport with 162.0mm on the 7<sup>th</sup>, Viwa with 158.0mm on the 7<sup>th</sup>, Nasinu with 148.0mm on the 4<sup>th</sup>, Koronivia with 146.0mm on the 4<sup>th</sup>, Nadarivatu with 145.0mm on the 7<sup>th</sup>, Sigatoka with 139.0mm on the 7<sup>th</sup>, and Navua with 123.0mm on the 5<sup>th</sup>.

Koronivia recorded the highest number of rain days with 25 days, followed by Monasavu, Matei Airfield, Matuku and Lomaivuna, all with 23 days, and Rotuma, Savusavu Airfield, Navua and Nasinu, all with 22 days. Consequently, Lautoka Mill recorded the least number of rain days with 8 days, followed by Lakeba with 10 days, Tavua with 11 days, Ono-i-Lau with 13 days, Rarawai Mill (Ba) with 14 days, and Nadi Airport with 16 days..

There were no new rainfall records observed during the month.



**Normal:** Long term average from 1991 to 2020  
**Well Below Average:** Rainfall less than 40% of normal  
**Below Average:** Rainfall between 40 to 79%  
**Rain Day:** Rainfall ≥ 0.1mm

**Average:** Rainfall between 80 to 119%  
**Above Average:** Rainfall between 120 to 199%  
**Well Above Average:** Rainfall greater than or equal to 200% of normal

## 4. AIR TEMPERATURES

### A. Maximum Day-time Air Temperatures

Normal to above normal day-time temperatures were generally observed in the country during the month. From the 21 climate stations with available anomalies, 16 recorded anomalies  $\geq +0.5^{\circ}\text{C}$ , while 5 recorded anomalies within  $\pm 0.5^{\circ}\text{C}$ .

The warmest days on average, were recorded at Momi with  $32.9^{\circ}\text{C}$ , followed by Labasa Airfield with  $32.4^{\circ}\text{C}$ , Rarawai Mill (Ba) with  $32.1^{\circ}\text{C}$ , Nacocolevu with  $32.0^{\circ}\text{C}$ , Rotuma with  $31.9^{\circ}\text{C}$ , Levuka with  $31.8^{\circ}\text{C}$  and Vanuabalavu with  $31.6^{\circ}\text{C}$ . Consequently, Nadarivatu recorded the coolest days on average with  $25.5^{\circ}\text{C}$ , followed by Monasavu with  $25.7^{\circ}\text{C}$ , Matuku and Ono-i-Lau both with  $30.1^{\circ}\text{C}$ , Vunisea and Sigatoka both with  $30.6^{\circ}\text{C}$ , Matei Airfield with  $30.7^{\circ}\text{C}$ , and Nabouwalu, Koronivia, Nausori Airport and Navua all with  $30.8^{\circ}\text{C}$ .

The highest day-time temperature of  $35.0^{\circ}\text{C}$  was observed at Momi on the 24<sup>th</sup>, followed by Yasawa-i-Rara with  $34.8^{\circ}\text{C}$  on the 2<sup>nd</sup>, Levuka with  $34.5^{\circ}\text{C}$  on the 26<sup>th</sup>, and Nacocolevu, Nabouwalu, Labasa Airfield and Rarawai Mill (Ba), all with  $34.0^{\circ}\text{C}$  on the 5<sup>th</sup>, 30<sup>th</sup>, 3<sup>rd</sup> and 1<sup>st</sup>, respectively.

The coolest day-time temperature was observed at Nadarivatu with  $22.2^{\circ}\text{C}$  on the 20<sup>th</sup>, followed by Monasavu with  $22.7^{\circ}\text{C}$  on the 24<sup>th</sup>, Rarawai Mill (Ba) with  $26.5^{\circ}\text{C}$  on the 22<sup>nd</sup>, Lautoka Mill with  $26.8^{\circ}\text{C}$  on the 23<sup>rd</sup>, Nausori Airport with  $27.1^{\circ}\text{C}$  on the 22<sup>nd</sup>, Koronivia with  $27.3^{\circ}\text{C}$  on the 22<sup>nd</sup>, Viwa with  $27.4^{\circ}\text{C}$  on the 22<sup>nd</sup>, and Yasawa-i-Rara with  $27.5^{\circ}\text{C}$  on the 22<sup>nd</sup>.

There were no new day-time temperature records established during the month.

### B. Minimum Night-time Air Temperatures

Night-time temperatures ranged from above to below normal during the month. Out of the 20 climate stations with available anomalies, 13 recorded anomalies  $\geq +0.5^{\circ}\text{C}$ , 2 recorded anomalies within  $\pm 0.5^{\circ}\text{C}$  and 5 recorded anomalies  $\leq -0.5^{\circ}\text{C}$ .

The coolest nights on average were recorded at Nadarivatu with  $18.3^{\circ}\text{C}$ , followed by Monasavu with  $19.6^{\circ}\text{C}$ , Matei Airfield with  $21.9^{\circ}\text{C}$ , Lakeba with  $22.1^{\circ}\text{C}$ , Sigatoka with  $22.5^{\circ}\text{C}$ , Labasa Airfield with  $22.6^{\circ}\text{C}$ , Nacocolevu with  $22.7^{\circ}\text{C}$ , and Navua and Rarawai Mill (Ba) both with  $22.8^{\circ}\text{C}$ . Consequently, on average, the warmest nights were observed at Rotuma with  $26.5^{\circ}\text{C}$ , followed by Momi with  $25.7^{\circ}\text{C}$ , Viwa with  $25.2^{\circ}\text{C}$ , Levuka with  $24.9^{\circ}\text{C}$ , Laucala Bay (Suva) and Matuku both with  $24.6^{\circ}\text{C}$ , Ono-i-Lau with  $24.4^{\circ}\text{C}$ , and Savusavu Airfield with  $24.3^{\circ}\text{C}$ .

The month's coolest night-time temperature was observed at Nadarivatu with  $15.7^{\circ}\text{C}$  on the 11<sup>th</sup>, followed by Monasavu with  $17.3^{\circ}\text{C}$  on the 11<sup>th</sup>, Matei Airfield with  $20.1^{\circ}\text{C}$  on the 14<sup>th</sup>, Penang Mill with  $20.3^{\circ}\text{C}$  on the 10<sup>th</sup>, and Lautoka Mill, Lakeba and Sigatoka all with  $20.5^{\circ}\text{C}$  on the 11<sup>th</sup>, 15<sup>th</sup> and 1<sup>st</sup>, respectively.

The warmest night-time temperature was recorded at Rotuma with  $27.5^{\circ}\text{C}$  on the 5<sup>th</sup>, followed by Viwa with  $27.3^{\circ}\text{C}$  on the 3<sup>rd</sup>, Savusavu Airfield with  $27.0^{\circ}\text{C}$  on the 30<sup>th</sup>, Levuka and Matuku both with  $26.9^{\circ}\text{C}$  on the 7<sup>th</sup> and 10<sup>th</sup>, respectively, Laucala Bay (Suva) with  $26.8^{\circ}\text{C}$  on the 29<sup>th</sup>, and Momi and Koronivia both with  $26.7^{\circ}\text{C}$  on the 21<sup>st</sup> and 7<sup>th</sup>, respectively.

There were no new night-time temperature records established during the month.

## TABLE 1. CLIMATE RECORDS ESTABLISHED IN APRIL 2026

There were no new climate records established during the previous month.

*Note: All comparisons in this summary are with respect to "Climatic Normals". This is defined to be the average climate condition over a 30-year period. Fiji uses 1991-2020 period as its "climatic normal" period.*

**TABLE 2. DAILY CLIMATE REPORTING SITES: SUMMARY FOR APRIL 2026**

	RAINFALL					AIR TEMPERATURES								SUNSHINE	
	TOTAL	RAIN		MAX.	FALL	AVERAGE DAILY				EXTREME				TOTAL	*
	MM	* DAYS	% +	MM		ON	MAX.	#	MIN.	#	MAX.	MIN.	ON	C	
NADI AIRPORT	403.6	215	16	162	7	31.2	0.4	23.1	0.5	33.3	1	21.8	30	168	87
LAUCALA BAY	322.5	96	21	80	21	31.1	0.8	24.6	0.5	33.4	27	22.5	5	141	93
NACOCOLEVU RESEARC	408.7	263	19	210	7	32.0	0.9	22.7	0.9	34.0	5	20.8	1	158	110
ROTUMA ISLAND	257.7	97	22	44	3	31.9	0.8	26.5	1.4	33.5	9	24.5	4	233	129
VIWA ISLAND	425.1	229	21	158	7	31.3	0.1	25.2	0.5	33.5	2	23.5	11		
YASAWA-I-RARA	177.1	107	19	29	5	31.3	0.3	23.2	-0.9	34.8	2	21.5	5		
UDU POINT WEATHER	154.7	53	19	19	20	31.0	0.4	23.7	-0.9	32.1	3	22.8	5		
NABOUWALU	262.2	96	21	46	5	30.8	0.8	U/S		34.0	30	U/S			
LABASA AIRFIELD	198.9	88	20	48	19	32.4	0.9	22.6	0.8	34.0	3	21.0	29		
SAVUSAVU AIRFIELD	162.1	78	22	26	7	31.1	1.1	24.3	0.6	33.1	3	23.1	12		
KORONIVIA RESEARCH	386.7	120	25	146	4	30.8	0.7	23.6	0.6	32.9	27	21.5	1		
NAUSORI AIRPORT	283.8	89	19	92	4	30.8	1.0	23.3	0.4	32.5	15	21.4	1		
NAVUA AWS	483.0	130	22	123	5	30.8		22.8		33.1	26	21.0	1		
MONASAVU HYDRO DAM	590.8	124	23	180	7	25.7	1.0	19.6	0.7	28.5	17	17.3	11		
FSC LAUTOKA MILL	317.4	163	8	240	7	31.2	0.2	22.9	-0.2	33.3	3	20.5	11		
FSC RARAWAI MILL	196.2	92	14	54	6	32.1	0.5	22.8	1.2	34.0	1	20.6	2		
FSC PENANG MILL	246.7	98	21	105	7	31.1	0.6	23.7	0.5	33.4	3	20.3	10		
MATEI AIRFIELD	330.5	123	23	67	16	30.7	0.8	21.9	-2.2	32.5	3	20.1	14		
VANUABALAVU	158.6	79	17	30	2	31.6	1.7	23.4	-0.9	33.0	28	21.6	18		
LAKEBA	213.1	92	10	82	5	31.0	1.2	22.1	-2.0	31.5	2	20.5	15		
VUNISEA AWS	214.5	69	21	35	7	30.6		23.9		33.2	14	21.8	11		
MATUKU	294.8	160	23	69	3	30.1	0.5	24.6	0.6	31.4	21	22.8	13		
ONO-I-LAU	109.2	61	13	40	19	30.1	1.2	24.4	0.8	32.7	15	21.5	23		
WAINIKORO AWS	U/S					U/S		U/S		U/S		U/S			
SAQANI AWS	U/S					U/S		U/S		U/S		U/S			
SEAQAQA AWS	U/S					U/S		U/S		U/S		U/S			
KUBULAU AWS	U/S					U/S		U/S		U/S		U/S			
RKS LODONI AWS	U/S					U/S		U/S		U/S		U/S			
LOMAIVUNA AWS	451.5		23	60	5	U/S		U/S		U/S		U/S			
KOROLEVU AWS	271.0		18	85	7	U/S		U/S		U/S		U/S			
NADARIVATU AWS	374.5		18	145	7	25.5		18.3		27.9	29	15.7	11		
SIGATOKA AWS	357.0		19	139	7	30.6		22.5		32.1	11	20.5	1		
KEYASI AWS	U/S					U/S		U/S		U/S		U/S			
MOMI AWS	U/S					32.9		25.7		35.0	24	24.0	1		
YAQARA AWS	U/S					U/S		U/S		U/S		U/S			
LEVUKA AWS	188.0		17	47	17	31.8		24.9		34.5	26	23.1	12		
DOBUILEVU TB3	394.5	112	21	106	16										
NASINU TB3	428.5		22	148	4										
TAVUA TB3	168.5	60	11	54	17										

TEMPERATURE( C) HUMIDITY WIND  
 DRY WET RH% VP  
 MEAN (AVERAGE AT 9AM) KT

NADI AIRPORT	27.1	27.4	24.4	77	27.3	5.9
LAUCALA BAY	27.8	28.4	25.9	82	28.9	
NACOCOLEVU RESEARC	27.4	27.6	25.4	84	27.6	
ROTUMA ISLAND	29.2	29.9	27.0	80	31.6	U/S
VIWA ISLAND	28.3	28.9	26.6	84	29.8	
YASAWA-I-RARA	27.2	28.2	26.4	87	28.6	
UDU POINT WEATHER	27.3	28.7	26.1	82	29.4	
NABOUWALU	U/S	28.7	25.9	80	29.4	U/S
LABASA AIRFIELD	27.5	28.6	26.0	80	29.3	8.4
SAVUSAVU AIRFIELD	27.7	28.3	25.8	81	28.8	5.5
KORONIVIA RESEARCH	27.2	28.0	25.9	85	28.3	
NAUSORI AIRPORT	27.0	27.6	25.5	84	27.6	4.5
MONASAVU HYDRO DAM	22.7	22.4	21.5	93	20.3	
FSC LAUTOKA MILL	27.1	26.1	24.9	91	25.3	
FSC RARAWAI MILL	27.5	27.7	27.1	96	27.8	
FSC PENANG MILL	27.4	28.6	25.7	79	29.3	
MATEI AIRFIELD	26.3	28.8	26.3	81	29.6	8.7
VANUABALAVU	27.5	29.3	26.0	78	30.5	
LAKEBA	26.5	29.6	26.4	78	31.0	
VUNISEA	U/S	U/S	U/S		U/S	
MATUKU	27.3	28.3	25.3	78	28.8	
ONO-I-LAU	27.2	27.9	25.1	80	28.1	

MEAN TEMPERATURE IS (MAX+MIN)/2; WIND IS MEAN SPEED AT 06,12,18,24 HOURS.  
 \$ :SOLAR RADIATION CALCULATED FROM SUNSHINE DURATION. # :DEPARTURE FROM LONG-TERM AVERAGES (1991-2020). + :NUMBER OF DAYS WITH 0.1 MM OR MORE RAIN. \* :PERCENT OF LONG-TERM AVERAGES.  
 BLUE FONT: MISSING RECORDS OF LESS THAN OR EQUAL(≤) TO 5 DAYS. U/S: UNSERVICEABLE GREEN FONT: AWS READING

Figure 2

Nadi Airport (Western Division) - Temperature & Rainfall Records for the last 13 Months (April 2025 - April 2026)

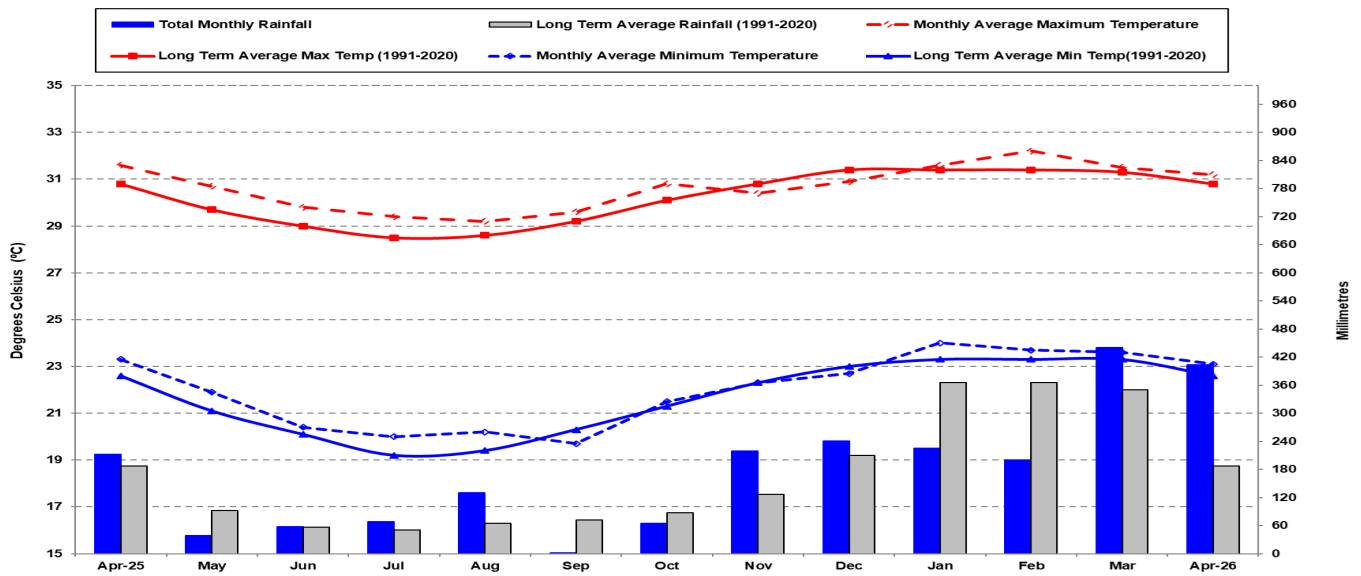


Figure 3

Laucala Bay - (Suva) (Central Division) - Temperature & Rainfall Records for the last 13 Months (April 2025 - April 2026)

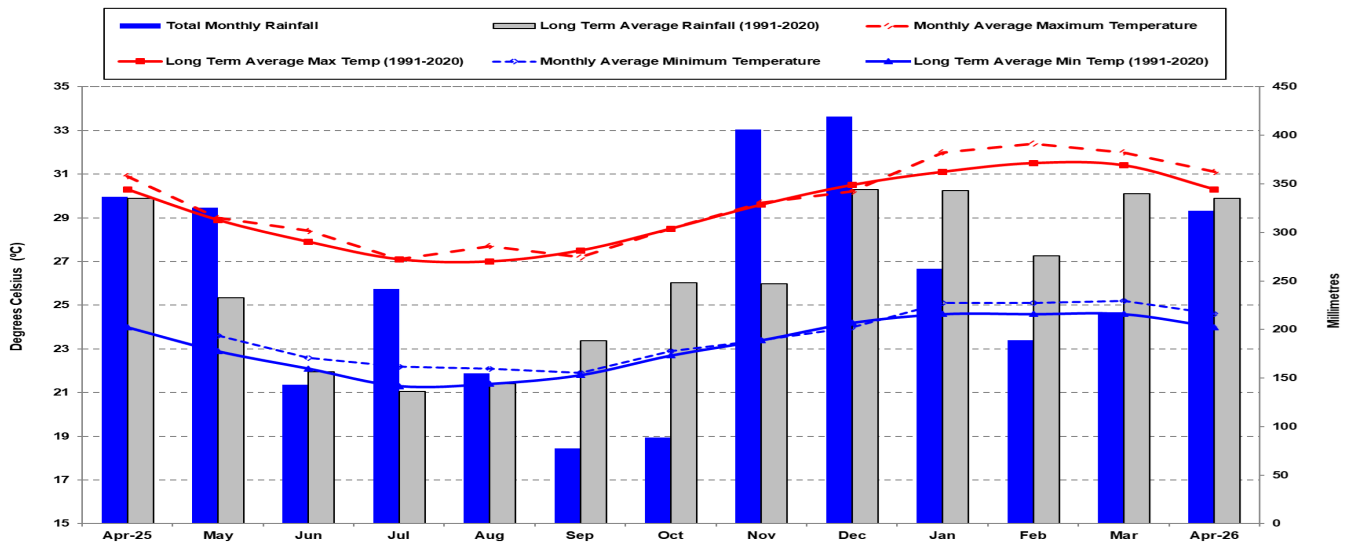


Figure 4

Udu Point (Eastern Division) - Temperature & Rainfall Records for the last 13 Months (April 2025 - April 2026)

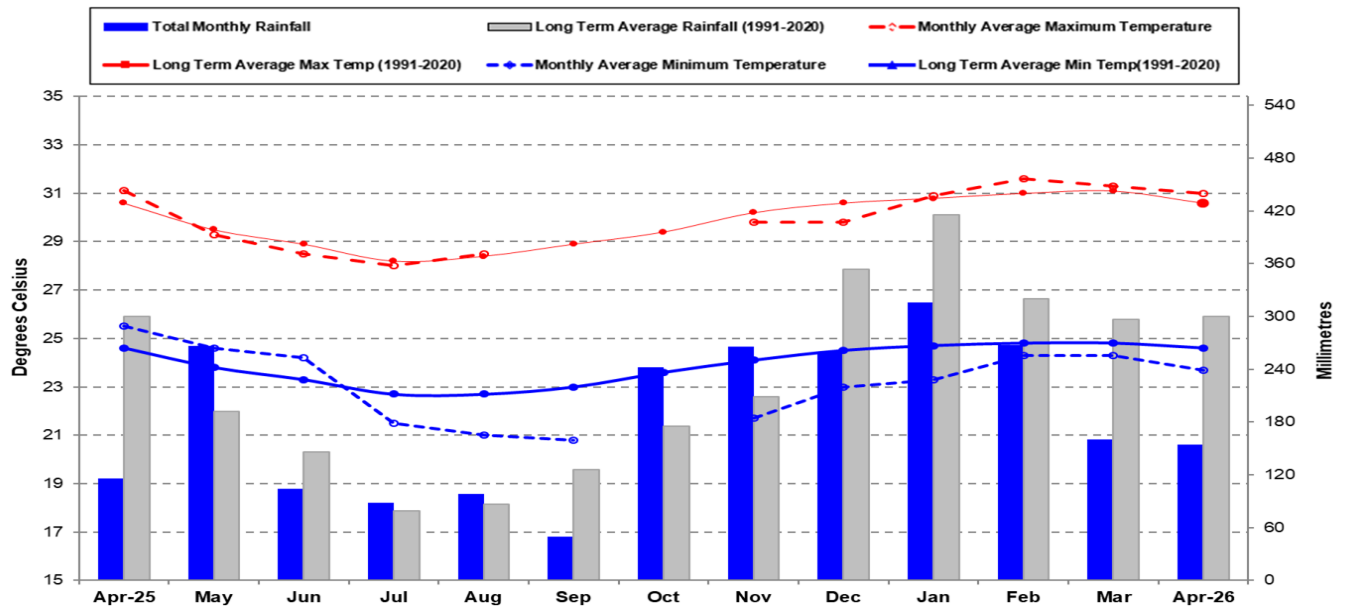
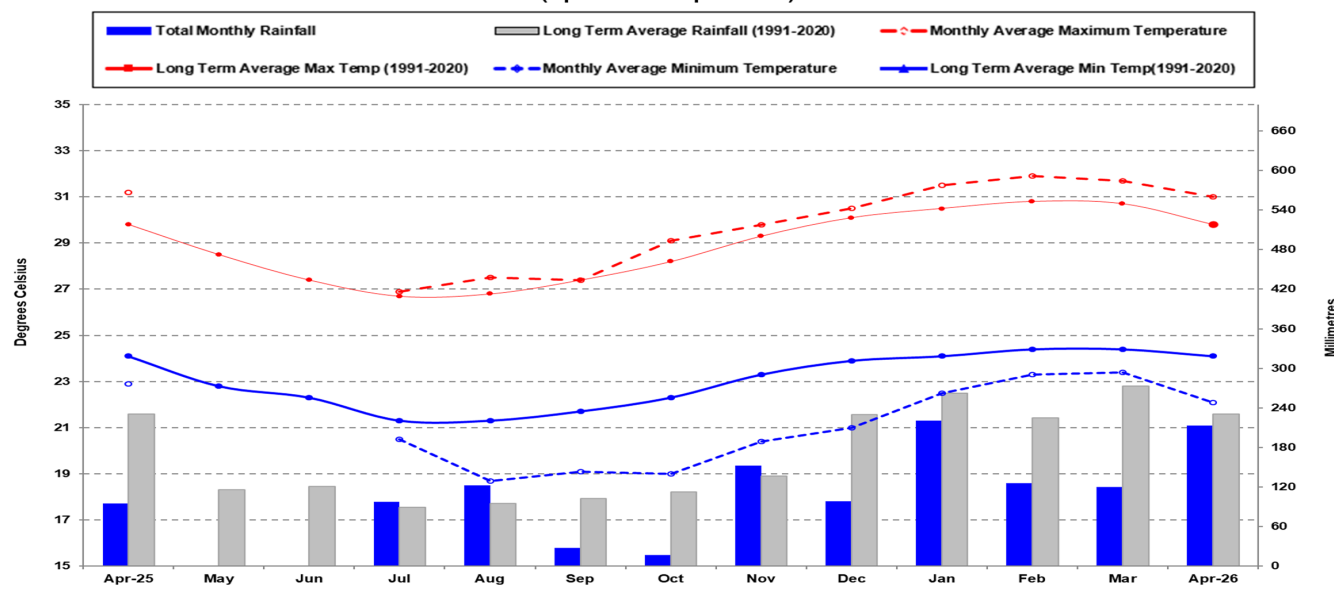


Figure 5

Lakeba (Eastern Division) - Temperature & Rainfall Records for the last 13 Months (April 2025 - April 2026)



### 5. DAILY RAISED PAN EVAPORATION

Figure 6

Daily Evaporation for April 2026

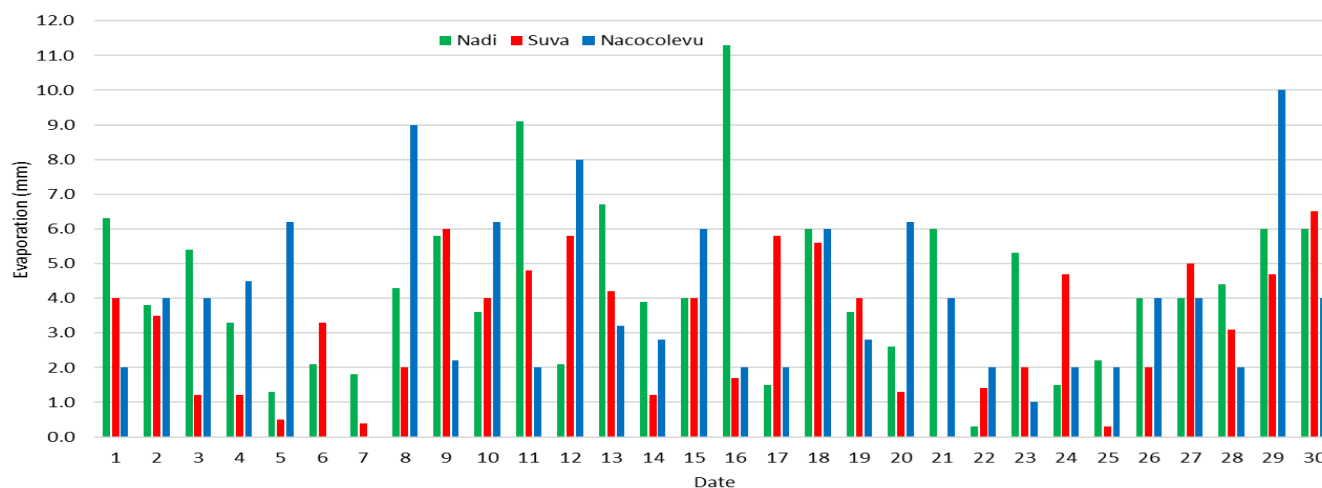


Figure 6: The total monthly raised pan evaporation at Nadi Airport, Laucala Bay (Suva) and Nacocolevu (Sigatoka) were 128.2.0mm, 94.2mm and 114.1mm, respectively. Nadi’s highest daily evaporation was 11.3mm on the 16<sup>th</sup> with Suva’s highest daily evaporation of 6.5mm on the 30<sup>th</sup>, and Nacocolevu (Sigatoka) recorded its highest of 10.0mm on the 29<sup>th</sup>.

### 6. SOLAR RADIATION

The Nadi solar radiation instrument was unserviceable during the month of April 2026.

7. WIND SUMMARY

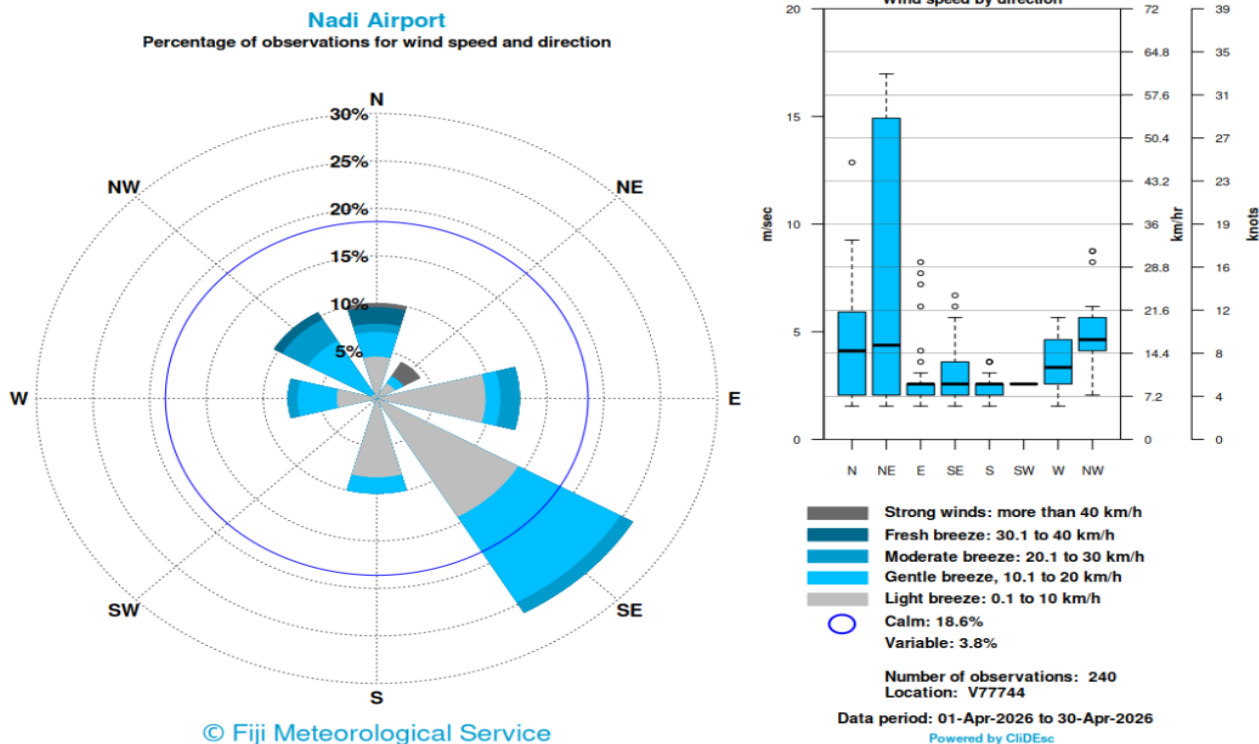


Figure 8a: Southeasterly winds were the dominant wind direction in Nadi’s 3-hourly observations during April, followed by easterly then northwesterly winds. Wind strength ranged from light breeze to strong winds, while calm winds accounted for 18.6% of observations.

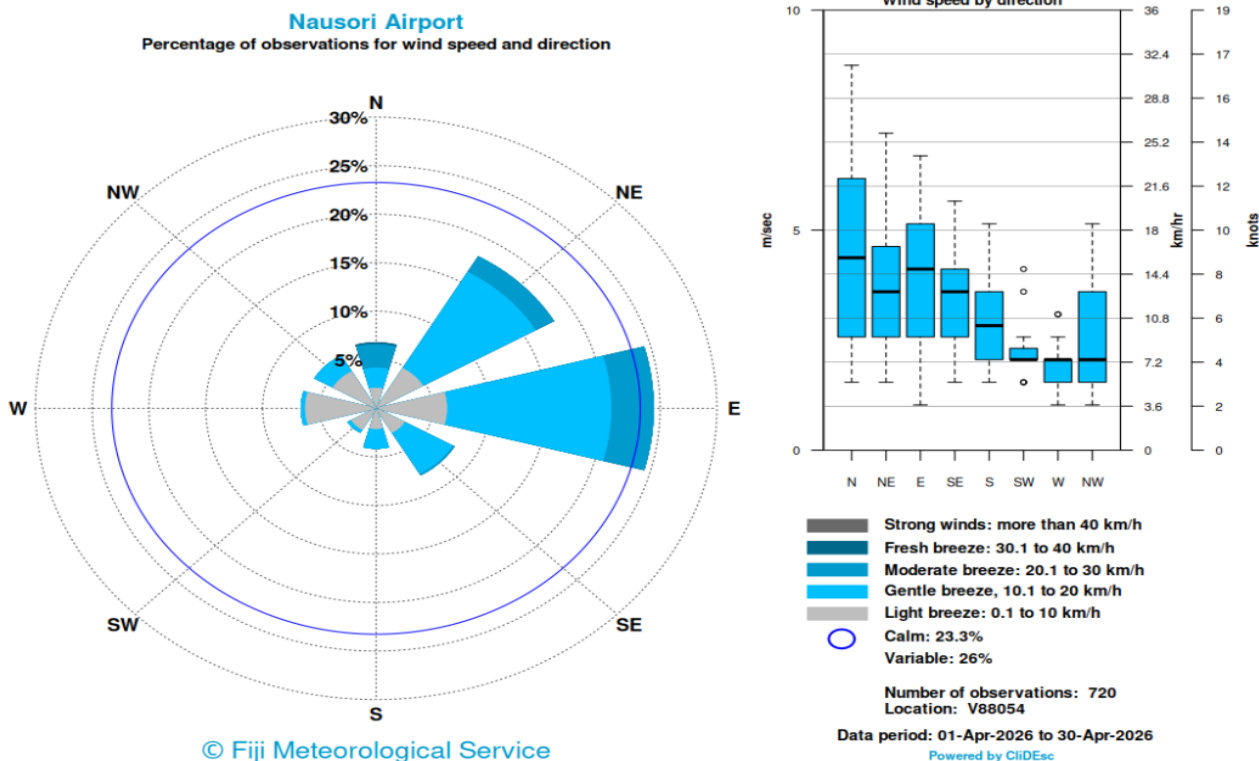
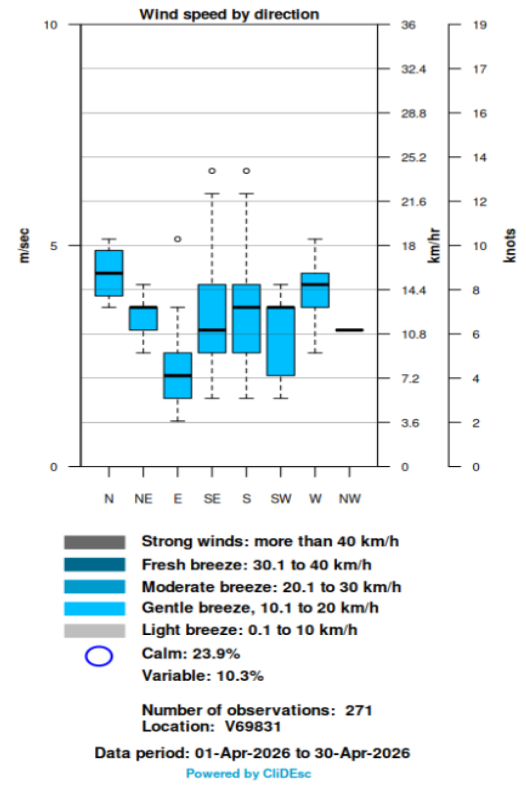
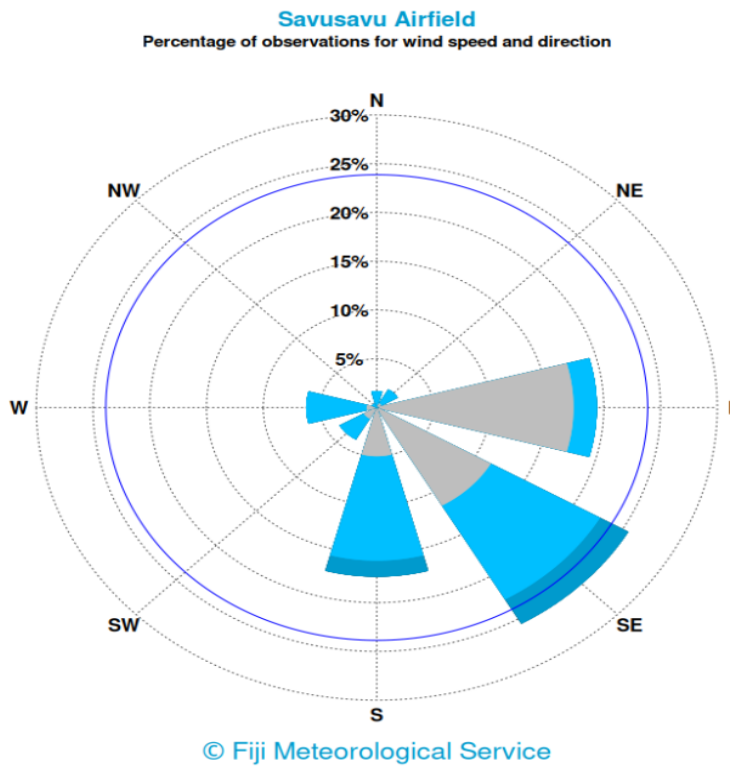
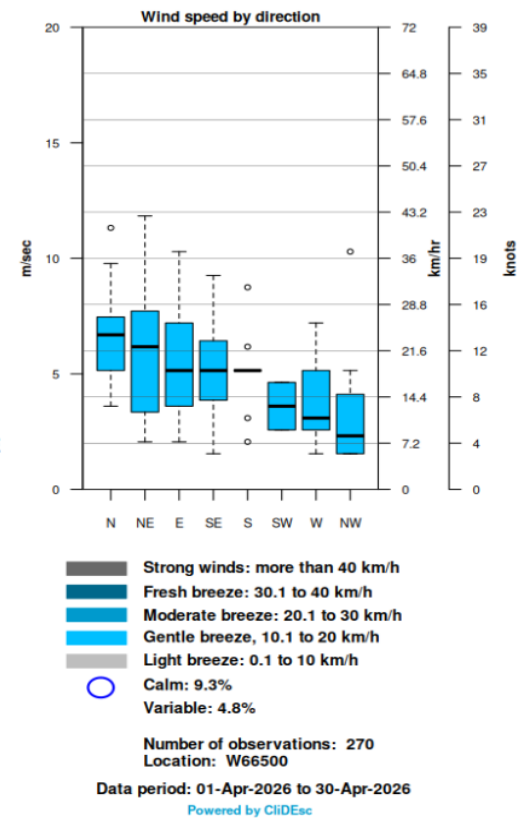
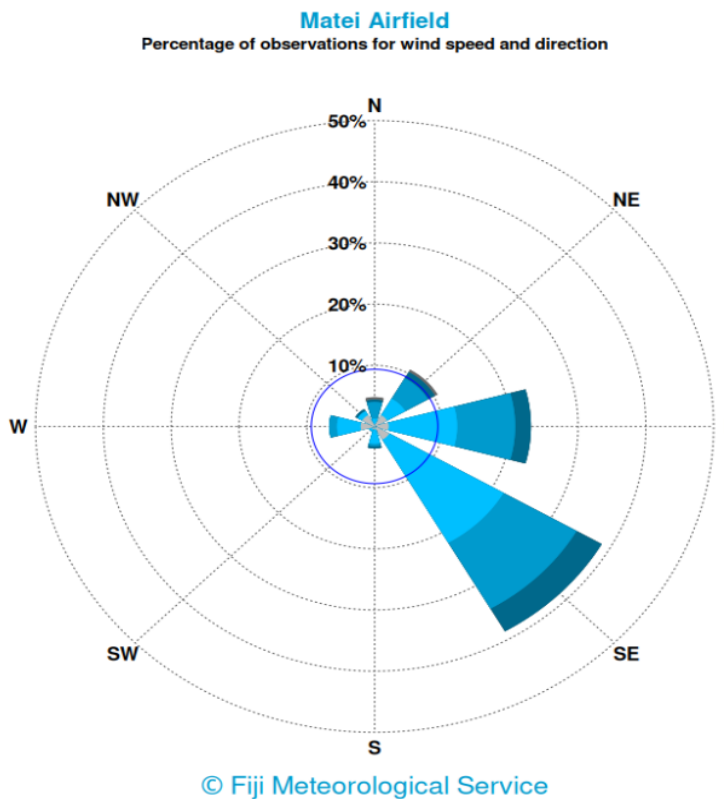


Figure 8b: Nausori Airport’s hourly wind observations for April were dominated by easterly winds, followed by northeasterly and southeasterly winds. Wind strength ranged from light to fresh breeze, while calm winds accounted for 23.3% of observations.

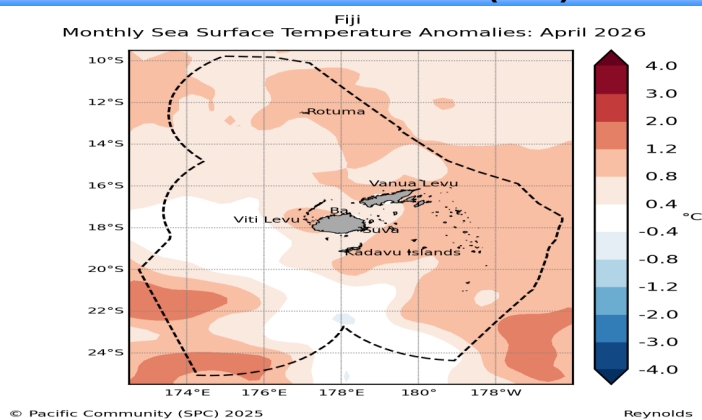


**Figure 8c:** Savusavu Airfield’s hourly wind observations from 0800hrs to 1600hrs were predominantly southeasterly during April, followed by easterly then southerly winds. Wind strength ranged from light to moderate breeze, while calm conditions were recorded in 23.9% of observations .



**Figure 8d:** Matei Airfield’s hourly wind observations from 0800hrs to 1600hrs were predominantly southeasterly during April, followed by easterly then northeasterly winds. Wind strength ranged from light breeze to strong winds, while calm conditions were recorded in 9.3% of observations.

## 8. SEA SURFACE TEMPERATURE (SST)

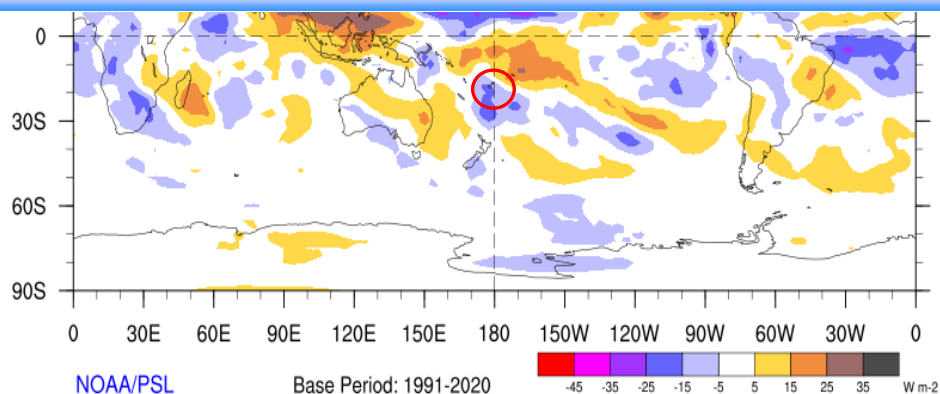


**Figure 9:**

Sea surface temperature anomalies, across Fiji waters, were generally observed ranging from 0.4 to 1.20°C above normal.

Source: <https://oceanportal.spc.int/explorer>

## 9. CLOUD COVER

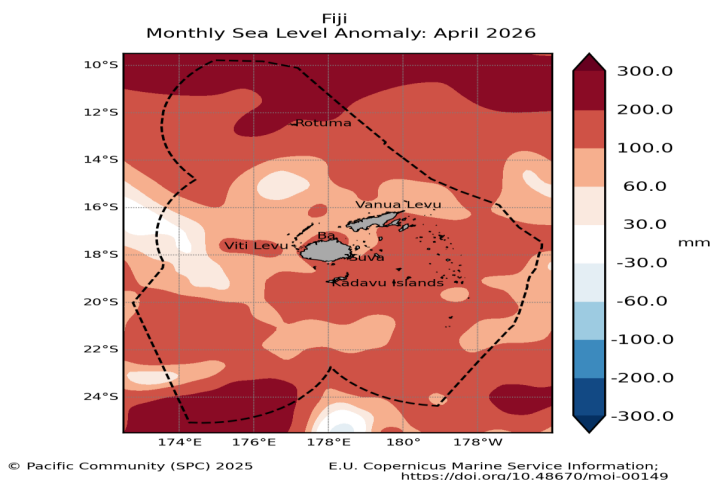


**Figure 10:**

30-Day Average OLR Anomaly: Above normal cloud cover was observed over the Fiji Group in the month of April (03/04/26– 02/05/26) (Fiji in red circle).

Source: <http://www.esrl.noaa.gov/psd/map/clim/olr.shtml>

## 10. SEA LEVEL



**Figure 11:**

During April, Above normal sea level anomalies were present across the Fiji Group.

Source: <https://oceanportal.spc.int/explorer>

## 11. WIND ANOMALIES

Wind anomalies map for the month of April could not be generated due to Technical difficulties.

## 12. FLASH FLOODING : 4<sup>th</sup>, 5<sup>th</sup> and 21<sup>st</sup>

During the first week of April, a broad trough and embedded low northwest of Fiji brought unsettled weather, similarly, nearby troughs brought rainy conditions from the 18<sup>th</sup> to 23<sup>rd</sup>, as a result the central division experienced instances of flooding in low-lying settlements and crossings (Figures 12a-e). Tropical Cyclone (TC) Vaianu affected the country from the 5<sup>th</sup> to the 9<sup>th</sup> causing widespread damage and disruption across parts of the Western Division. Reported impacts included damaged and collapsed homes, flooded roads and settlements, vehicles, blocked roads, high river levels, damaged vegetation and farms, as well as the need for emergency assistance operations in affected communities. No deaths were reported (Figures 14e-t).



Figure 12a: Sasawira Farm road, Central Division, on the 4<sup>th</sup>. Source: Asenaca Ratu.



Figure 12b: Mataika rd, Central Division, on the 4<sup>th</sup>. Source: FijiVillage.



Figure 12c: Flooding on the 5<sup>th</sup> in parts of Davuilevu, Vunimomo and Narere. Central division. Source: NDRMO.



Figure 12d: Inundated Queens road, Vunaniu Flats, Central Division, on the 21<sup>st</sup>. Source: Fiji Roads Authority.



Figure 12e: Man clears debris from waterway, Vunaniu flats, Central Division, on the 21<sup>st</sup>. Source: Evon Narruhn

## 13. WATERSPOUT EVENT – 8<sup>th</sup>

A waterspout is a short-lived rotating column of air over water, usually seen as a funnel or spray ring reaching from the sea surface toward a cloud base. It forms in unstable weather, often with thunderstorms over warm coastal waters. Warm, moist air rises, cools, and forms towering clouds, while changes in wind speed or direction create rotation. As the rising air stretches upward, the rotation strengthens and can develop into a visible funnel.

A large waterspout was observed off the coast of Ono-i-Lau, Fiji, on 8 April 2026. Eyewitness footage showed a well-defined vortex extending from the ocean surface to the clouds, drawing attention from local residents. No damage was reported (figure 13a).



Figure 13a: Waterspout spotted off the coast of Ono-i-Lau on the 8<sup>th</sup>. Source: Tua Waqavakatoga

### 14. Tropical Cyclone Vaianu: 5<sup>TH</sup>-9<sup>TH</sup>

Tropical Cyclone (TC) Vaianu was the second named system in the Southwest Pacific Region by the Regional Specialized Meteorological Center (RSMC) Nadi during the 2025/2026 Tropical Cyclone Season.

TC Vaianu originated as a low-pressure system embedded within a surface trough and was first classified as a tropical disturbance at 1800 UTC on 3<sup>rd</sup> April 2026 near 11.8°S 171.5°E. Development was supported by warm sea surface temperatures of about 29-30°C, good low-level convergence and improving upper-level outflow, although early vertical wind shear slowed organization.

TC Vaianu developed into a tropical depression on the 4<sup>th</sup> and was named on the 5<sup>th</sup> near 14.9°S, 172.2° E. It rapidly intensified from Category 1 to Category 3 within 18 hours, reaching Category 3 strength on the 6<sup>th</sup> with peak sustained winds of about 85 knots, and remained at this intensity for around 48 hours. The cyclone tracked within Fiji’s Exclusive Economic Zone from the 6<sup>th</sup> to 8<sup>th</sup>, while remaining mainly offshore. It later weakened as it moved south into stronger wind shear and cooler waters. It was downgraded to Category 2 on the 8<sup>th</sup>, moved south of 25°S later that day, and responsibility was transferred to New Zealand MetService. Vaianu was later classified as a subtropical system on the 9<sup>th</sup>.

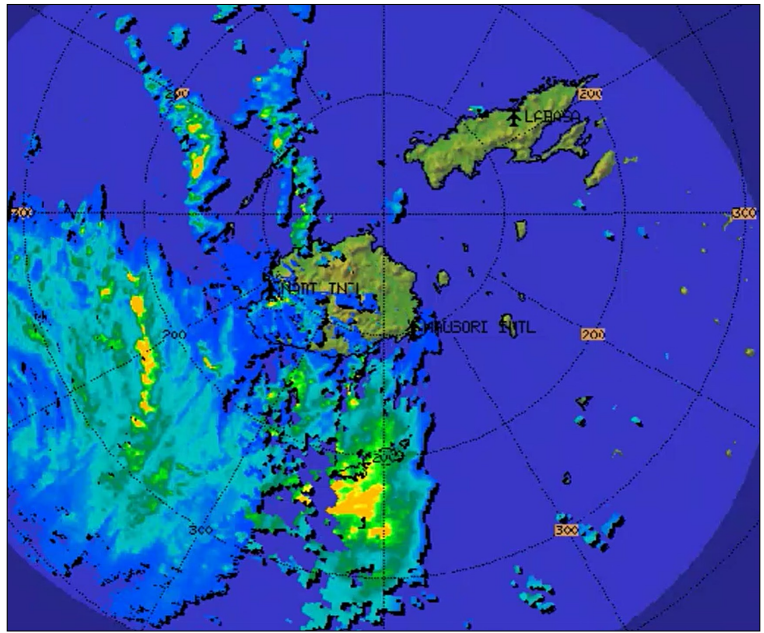


Figure 14a: Tropical cyclone Vaianu’s eastern wall visible on the RADAR network in Fiji at 3pm on the 7<sup>th</sup>.

Although the center remained mainly west and south of Fiji, broad rainbands produced widespread rainfall and flooding. From 9am 5<sup>th</sup> to 9am 7<sup>th</sup> April, the highest 72-hour total was 195.0 mm at Monasavu, followed by Nasinu (157.0 mm), Navua (152.5 mm), Koronivia (150.0 mm), Nadi (149.7 mm) and Lautoka (130.5 mm). Its broad circulation and outer rainbands produced significant indirect impacts across the country.

Major impacts seen were from prolonged heavy rain causing flash flooding, riverine flooding, road disruptions and inundation of low-lying areas, particularly over Viti Levu and flood-prone areas of the Western and Central Divisions. Strong to gale-force winds were also experienced across parts of the Yasawa and Mamanuca Groups, western Viti Levu, Kadavu, and southern maritime areas, resulting in minor structural damage, damage to vegetation, power lines, as well as partial obstruction of roads and access routes.

Rough to very rough seas affected Fiji waters, disrupting small craft operations, inter-island travel and coastal communities. The event also caused power outages, transport and aviation disruptions, temporary service interruptions, and agricultural losses. Post event assessments approximated that 14,000 households were affected, with total damages estimated at about USD 1.5 million, mainly within the crop subsector. (source: FBC News).

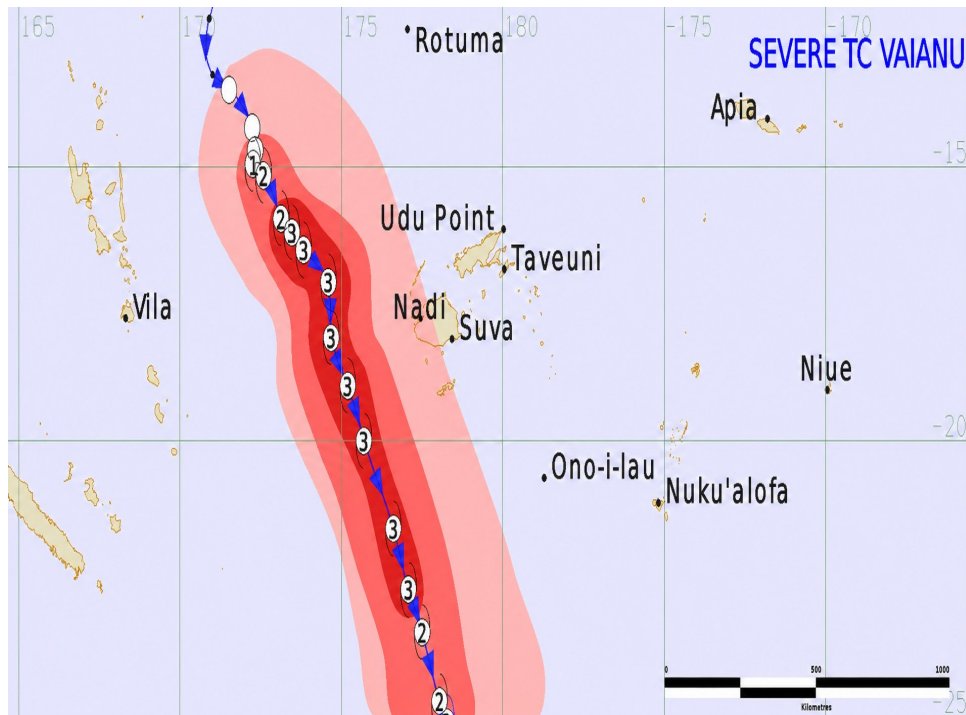


Figure 14b: Best track map of tropical cyclone Vaianu. Pink, dark pink and red colours indicate extent of gale, storm and hurricane force winds, number indicate TC category.

Overall, TC Vaianu’s impacts in Fiji were primarily associated with strong gusty winds, heavy rainfall, flooding, hazardous marine conditions and associated disruptions, despite the cyclone center remaining offshore. (Figures 14e-t)

Strong to gale-force winds affected parts of the Western Division, Yasawa and Mamanuca Groups, southern and maritime areas, while rough to very rough seas affected Fiji waters. The highest wind speed during the passage of TC Vaianu was recorded at Nadarivatu with 83.5 km/hr, followed by Yasawa with 81.0 km/hr, Momi with 76.0 km/hr, and Ba with 60.1 km/hr. Wind speeds of 50 km/hr or more were also recorded at Lakeba with 51.1 km/hr and Levuka with 50.4 km/hr (Figure 14c).

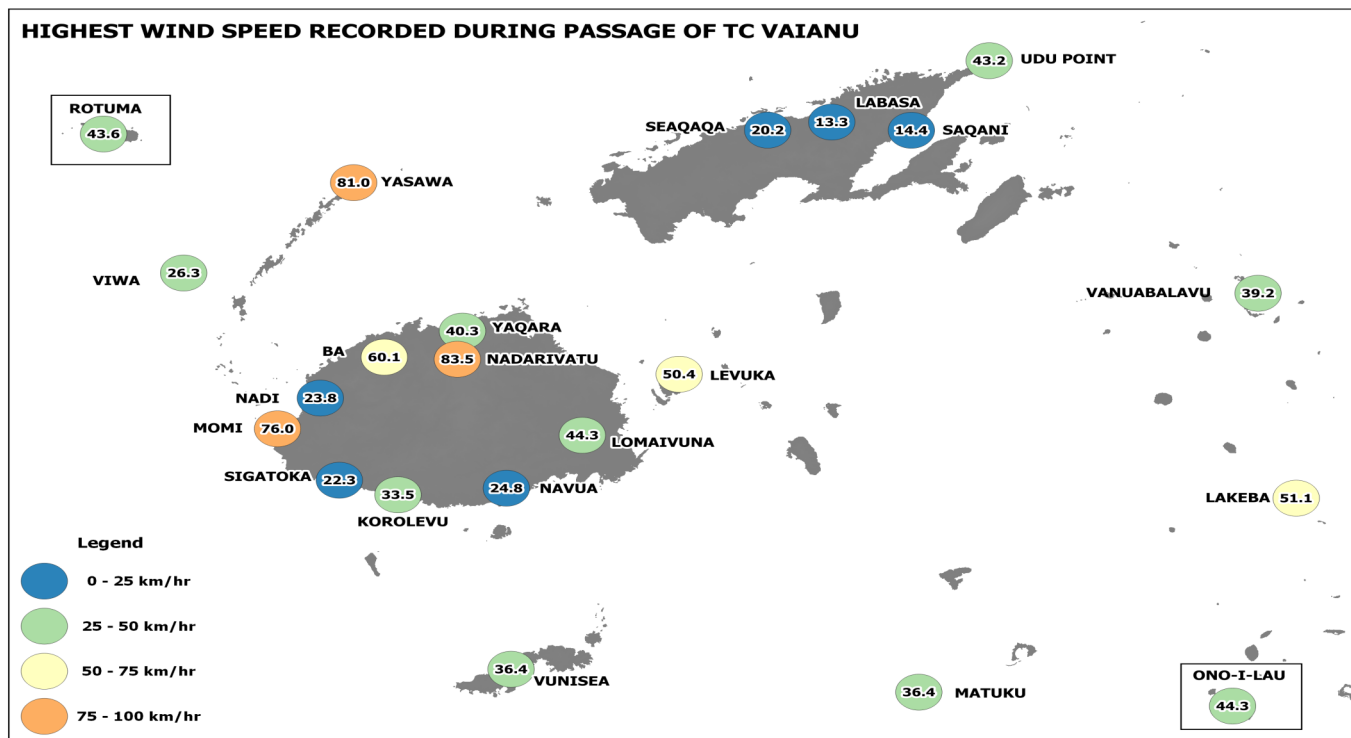


Figure 14c: Maximum recorded sustained winds during the passage of Tropical Cyclone Vaianu.

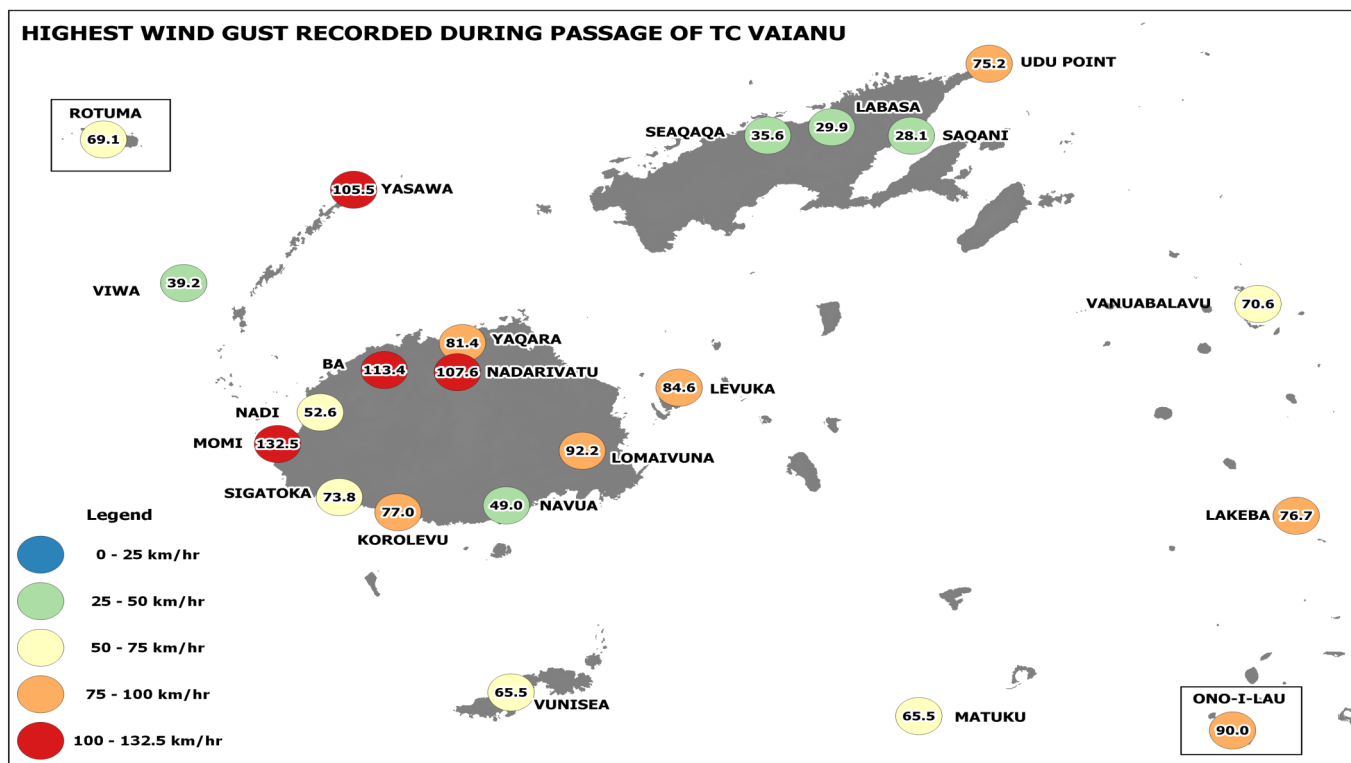


Figure 14d: Maximum recorded Wind gusts during the passage of Tropical Cyclone Vaianu.

The highest wind gust was recorded at Momi with 132.5 km/hr, followed by Ba with 113.4 km/hr, Nadarivatu with 107.6 km/hr, and Yasawa with 105.5 km/hr, Lomaivuna with 92.2 km/hr and Ono-i-Lau with 90.0 km/hr (Figure 14d).



Figure 14e: A home damaged by a large tree in Yako, Western Division. Source: Elena Vucukula.



Figure 14f: Partially flooded Naisoso Road, Nadi, Western Division. Source: Amy McGowan-Filoloko.



Figure 14g: High water levels at Sabeto Bridge, Western Division. Source: Fiji Meteorological Service.



Figure 14h: Clean up operations of debris in the Western Division. Source: Bose Vavataga.



Figure 14i: A collapsed home in Lautoka, Western Division. Source: The Fiji Times.



Figure 14j: A flattened sugarcane plantation in Lautoka. Source: The Fiji Times.



Figure 14k: Police officers in the Western Division assisting with evacuation centers. Source: Fiji Police Force.



Figure 14l: Flooded waterway in Vunato Settlement, Lautoka, Western Division. Source: Miri Cabealawa



Figure 14m: A submerged car on the side of the road in Lolomo, Lautoka, Western Division. Source: The Fiji Times.



Figure 14n: Debris at Marine Drive, Lautoka, Western Division. Source: Shalend Singh.



Figure 14o: Surface flooding at Votua Levu entrance, Nadi, Western Division. Source: Theresa Fong.



Figure 14p: High waters at a bridge outside of Nadi Town, Western Division. Source: Viliame Nawaqa.



Figure 14q: Sabeto Hotsprings, Nadi, Western Division. Source: Apisai Nabou.



Figure 14r: Clearing of debris from roof of a home in Moala Village, Western Division. Source: Fiji Red Cross Society.



Figure 14s: Fallen branches covering parts of Queens road, Western Division. Source: Fiji Roads Authority.



Figure 14t: Roof damage from strong winds to a house in Drasa, Lautoka, Western Division. Source: FijiLive.

## EXPLANATORY NOTES

**Anomalies** - denote the departure of an element (rainfall, temperature, sea surface temperature, cloud cover, sea level and wind) from its long-period average value for a particular location.

**Trough** - an elongated area of low atmospheric pressure that is associated with a cyclone, or low. Sometimes referred to as a 'trough of low pressure'.

**Rain** - Liquid precipitation in the form of water droplets. Rain falls from dense, continuous clouds, called 'stratiform' clouds.

**Shower** - precipitation from individual clouds, often characterised by the sudden beginning or ending. Showers fall from 'lumpy looking', 'cauliflower' clouds, called 'cumuloform' clouds.

**Trade Winds** - the trade winds are the east to southeasterly winds (in the Southern Hemisphere) which affect tropical and subtropical regions.

**High pressure systems** or anticyclones are atmospheric circulations that rotate anti-clockwise in the Southern Hemisphere. Anticyclones are areas of higher pressure and are generally associated with lighter winds and fine and settled conditions.

**Low pressure systems** or mid-latitude cyclones are atmospheric circulations that rotate clockwise in the Southern Hemisphere (anti-clockwise in the Northern Hemisphere). Cyclones are areas of lower pressure and generally associated with stronger winds, unsettled conditions, cloudiness and rainfall.

**Sea Surface Temperature (SST)** - the temperature of the water's surface. It is usually measured using buoys, ship data, and satellites.