



The Ministry Of Infrastructure & Transport

Nasilivata House
87, Ratu Mara Road, Samabula
Private Mail Bag, Suva, Fiji

Telephone: (679) 338 4111
Facsimile: (679) 338 3198
Website: www.mwtpu.gov.fj



MEDIA RELEASE No. 2

3pm Monday, 10 October 2016

HEAVY RAIN AND STRONG WIND WARNING

As anticipated, heavy rain is currently affecting the country and as such Heavy Rain Warning remains in force for whole of Fiji. A strong wind warning is also in force for Waters and Land Areas of Fiji. A flood Alert is now in force for all low lying areas and small streams adjacent to major rivers. Heavy rain and strong winds are expected to continue today and gradually start easing from later tomorrow.

The heavy rain is due to active trough of low pressure and associated low pressure system that lies over Fiji and expected to gradually move through the group later tonight. As a result of this trough and low pressure system, the country is currently experiencing periods of rain, heavy at times with squally thunderstorm.

The trough has produced rainfall in excess of 50mm in some places and it still has potential to produce more than 100mm of rainfall over next 24 hours. This amounts of rainfall is likely to cause flash flooding and flooding of low lying areas due to localised heavy rain. With the ground already saturated, the chance of major tributaries and river flooding remains possible.

Strong winds over land areas can be anticipated with average speed of 50km/hr and gusting to 60km/hr in squally thunderstorms. Otherwise moderate northeast winds are expected.

Mariners can expect northerly winds up 25 to 30 knots and rough to very rough seas. Visibility will be poor in areas of heavy rain and thunderstorms.

Over the last 24 hours (from 9am on Sunday to 9am this morning), Laucala Bay and Monasavu recorded 57mm, Yasawa-i-rara 77mm, Vunisea 84mm and majority of the locations recorded between 50 to 30mm over the same period.

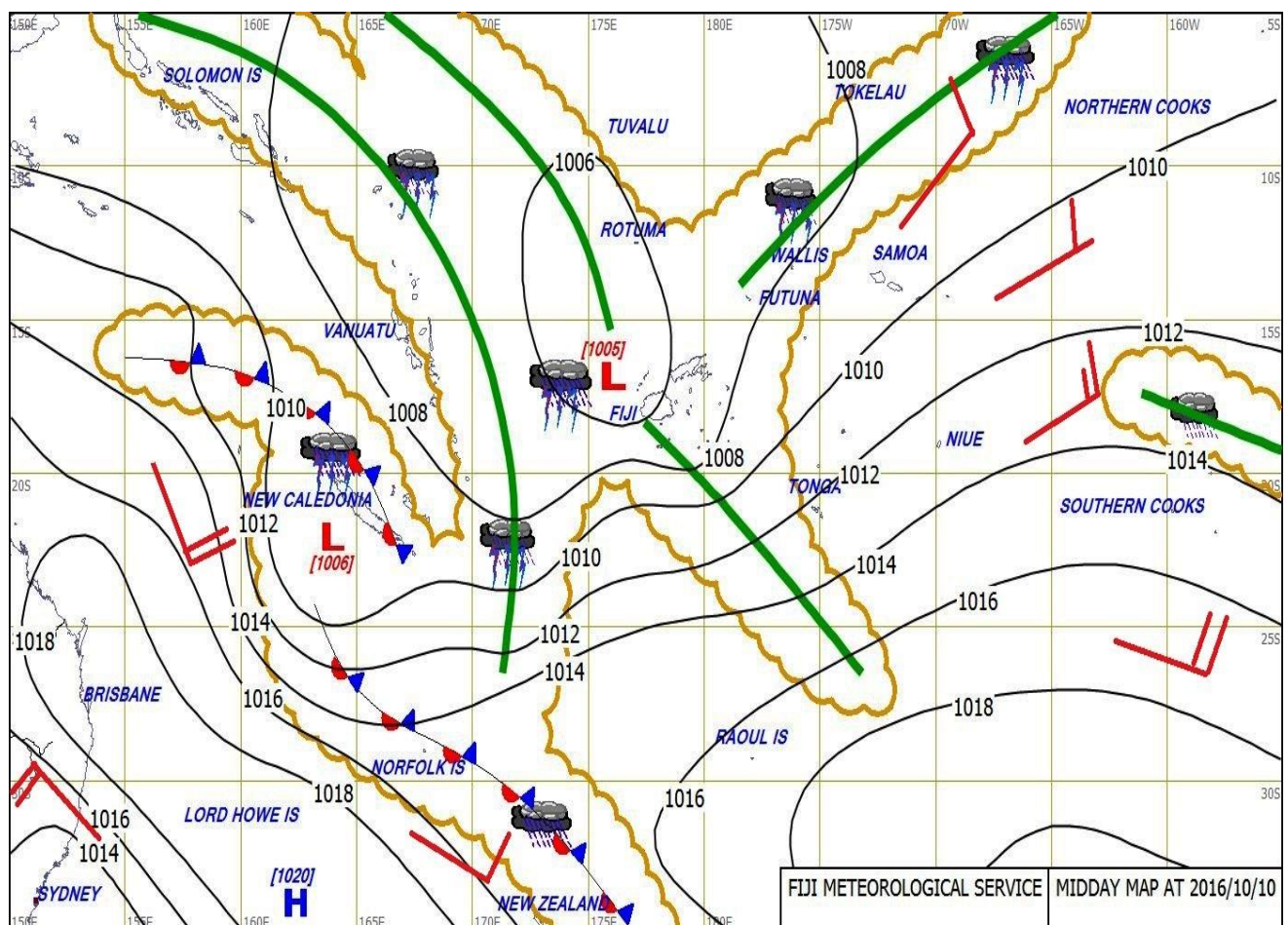
The rainy weather is expected to improve later tomorrow as the trough weakens and moves to the south of the group. Following the trough, is a ridge of high pressure which will bring about cool southerly wind change over the country. This change will ease rain to some showers over most places. Rotuma is expected to experience periods of rain until Wednesday.

Fiji Meteorological Service will continue to monitor the situation and advises the public to take weather forecast and warnings seriously and keep updated with the latest weather information. Keep away from the flooded drains/creeks/streams and be prepared for unexpected at all times. They are reminded to be cautious and alert if they are living in low lying areas that are prone to flooding. Mariners are advised to keep updated with the latest marine bulletins before planning their journey. Road users, take extreme care when driving in wet weather conditions.

For more information and clarification: Please contact the Director of Meteorological Service, Mr Ravind Kumar on 9905379 (Mobile) or ravind.kumar@met.gov.fj (Email).



DMET



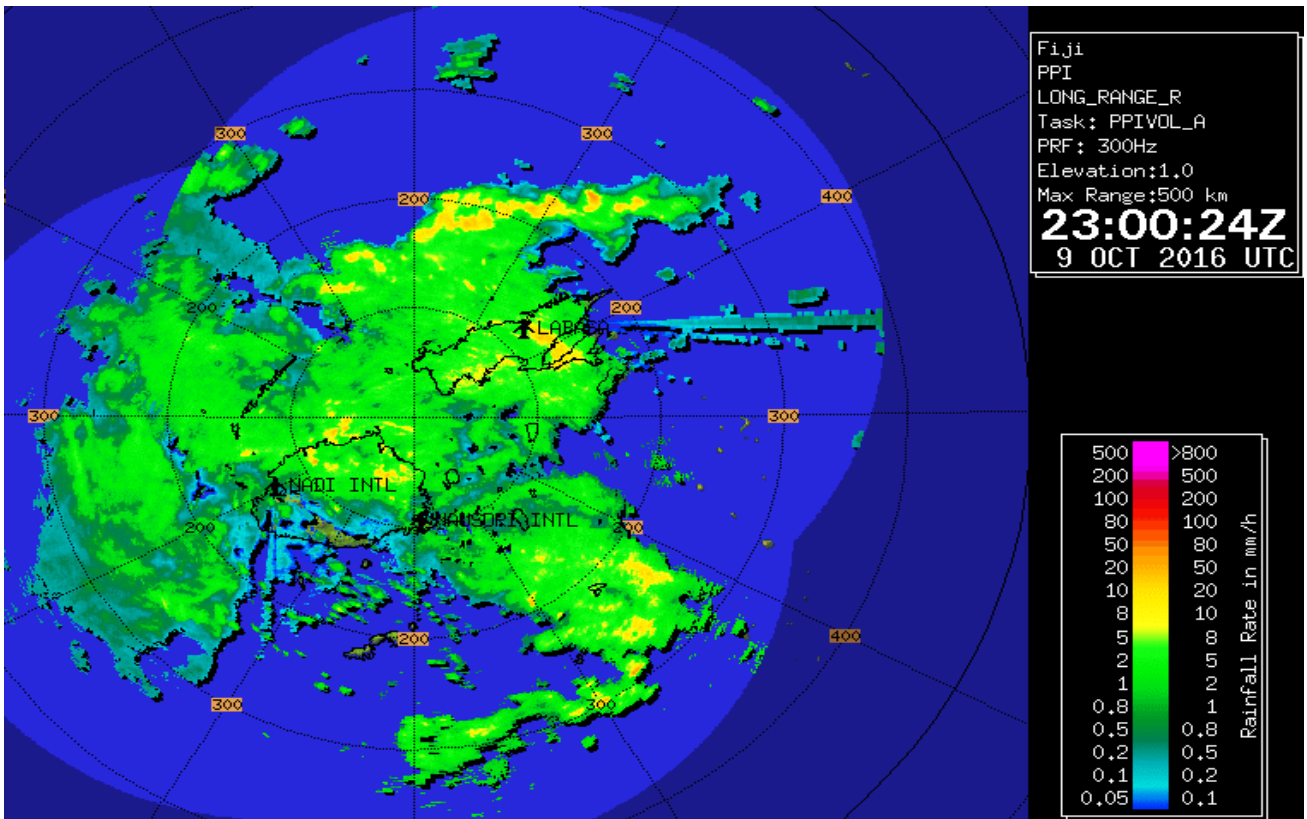


Figure 1: Radar Image of at 11am this morning showing rain affecting the country.

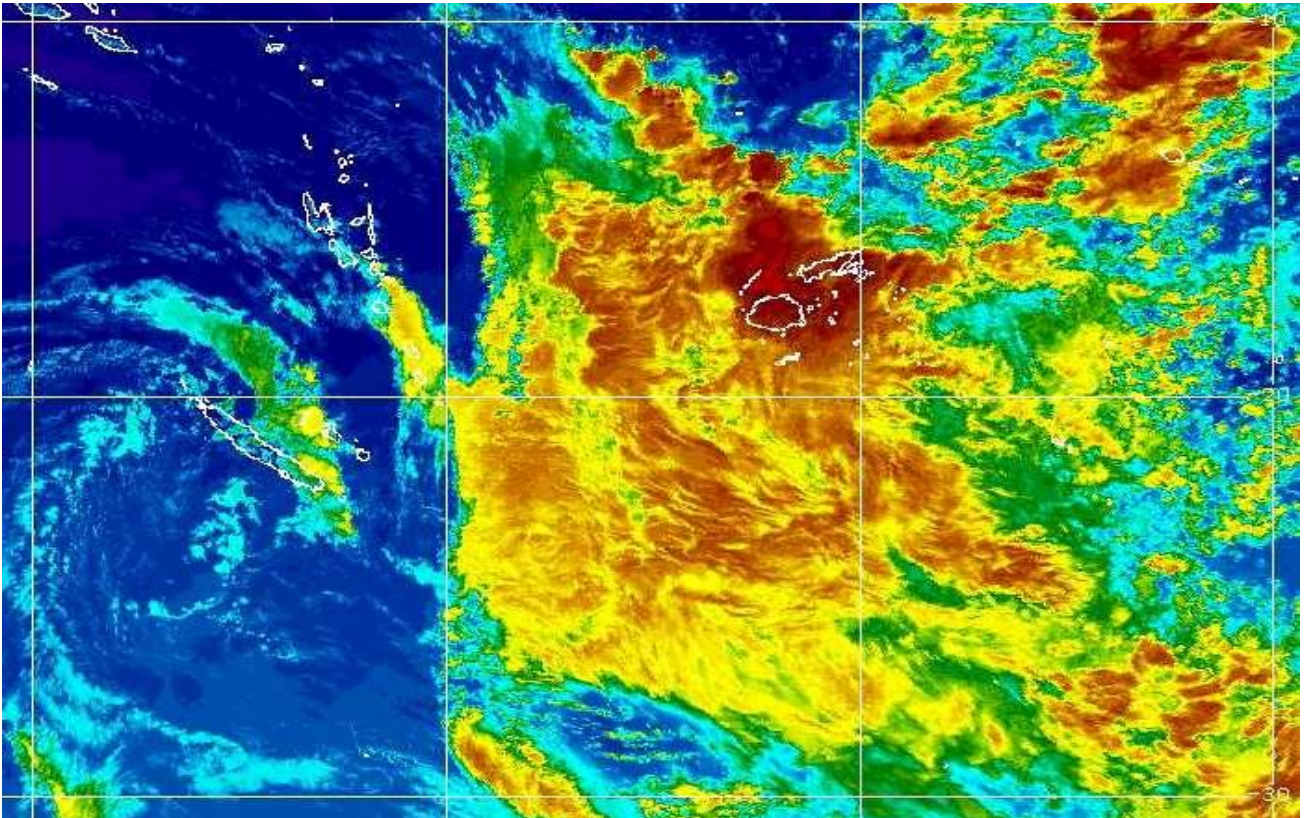


Figure 2: Colourised Infrared satellite imagery at 01:30pm on Monday 10 October, 2016. (The darker red is indicative of areas of heavy rainfall in a rain band).

Ends...