



## **MEDIA RELEASE No.3**

**3.00pm Sunday 17<sup>th</sup> April 2016**

### **TROPICAL DEPRESSION (TD17F)**

Tropical Depression (TD17F) centre [999HPA] was located near 17.8 South latitude and 179.6 West longitude or about 100km west-northwest of Lakeba and 110km south-southeast of Taveuni at midday today.

TD17F is moving southeast at about 16km/hr away from the group. The associated active rain band that was causing heavy rain over the country has eased and the *heavy rain warning that was previously in force for whole of Fiji is now cancelled.*

However, associated cloud bands are expected to affect the eastern parts of the country till tonight. Occasional showers over Lau and Lomaiviti group, eastern and interior of larger islands can be expected. Elsewhere, fine apart from isolated afternoon or evening showers.

*A Strong Wind Warning remains in force for the land areas of Lau and Lomaiviti group, Eastern Vanua Levu, Taveuni and nearby smaller islands and is now cancelled for other land areas.*

Over the land, strong clockwise winds with average speed of 55km/hr and gusts to 85 km/hr over Lau and Lomaiviti group, eastern Vanua Levu, Taveuni and nearby smaller islands. Winds becoming predominantly southeasterly and easing from tomorrow. Elsewhere, moderate to fresh southeast winds, gusty at times.

*A flood warning remains in force for the low lying areas adjacent to Rakiraki River.*

*A flood warning remains in force for the low lying areas adjacent to Dreketilailai station and downstream to Boubale Bridge at Bulileka and Qawa River, low lying areas and adjacent to Dewala, Llabasa River including Labasa Town and low lying areas adjacent to Wailotua station.*

*A flood alert remains in force for the low lying areas adjacent to Navolau station and downstream of Rewa River;*

*The flood alert that was previously in force for all small streams, creeks and low lying areas adjacent to major rivers for the whole of Vanua Levu is now cancelled.*

The flood alerts and warnings are expected to be cancelled tonight as weather further improves.

*A strong wind warning remains in force for all Fiji waters.*

Clockwise winds 25 to 30 knots gusting to 45 knots. Winds becoming predominantly southeasterly from tomorrow.

*The strong wind warning that was previously in force for Rotuma Land and Waters is now cancelled.*

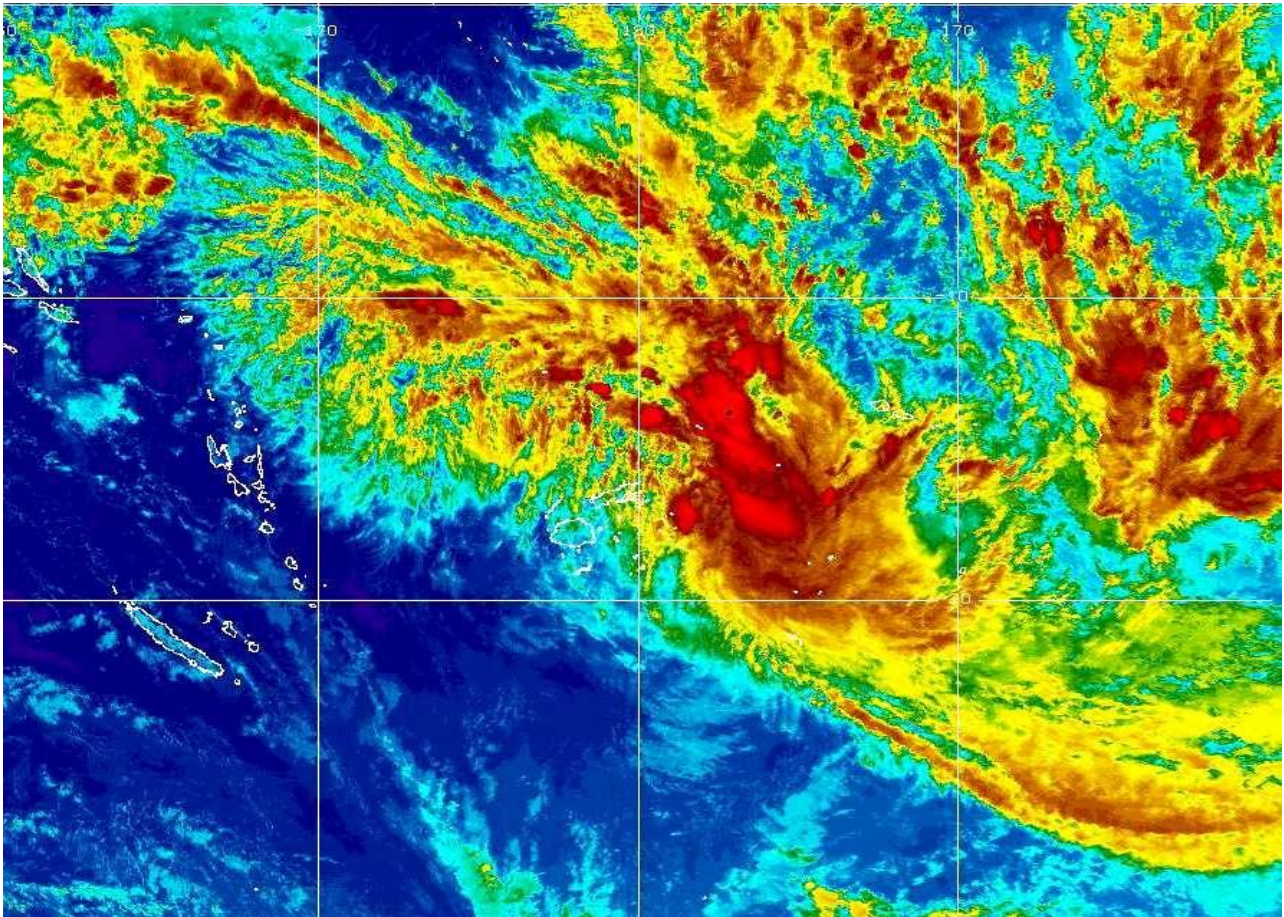


Figure 1: Satellite Image at 2pm on Sunday 17<sup>th</sup> April, 2016. Red shades are an area with heavy rain is displaced to the east of Fiji.

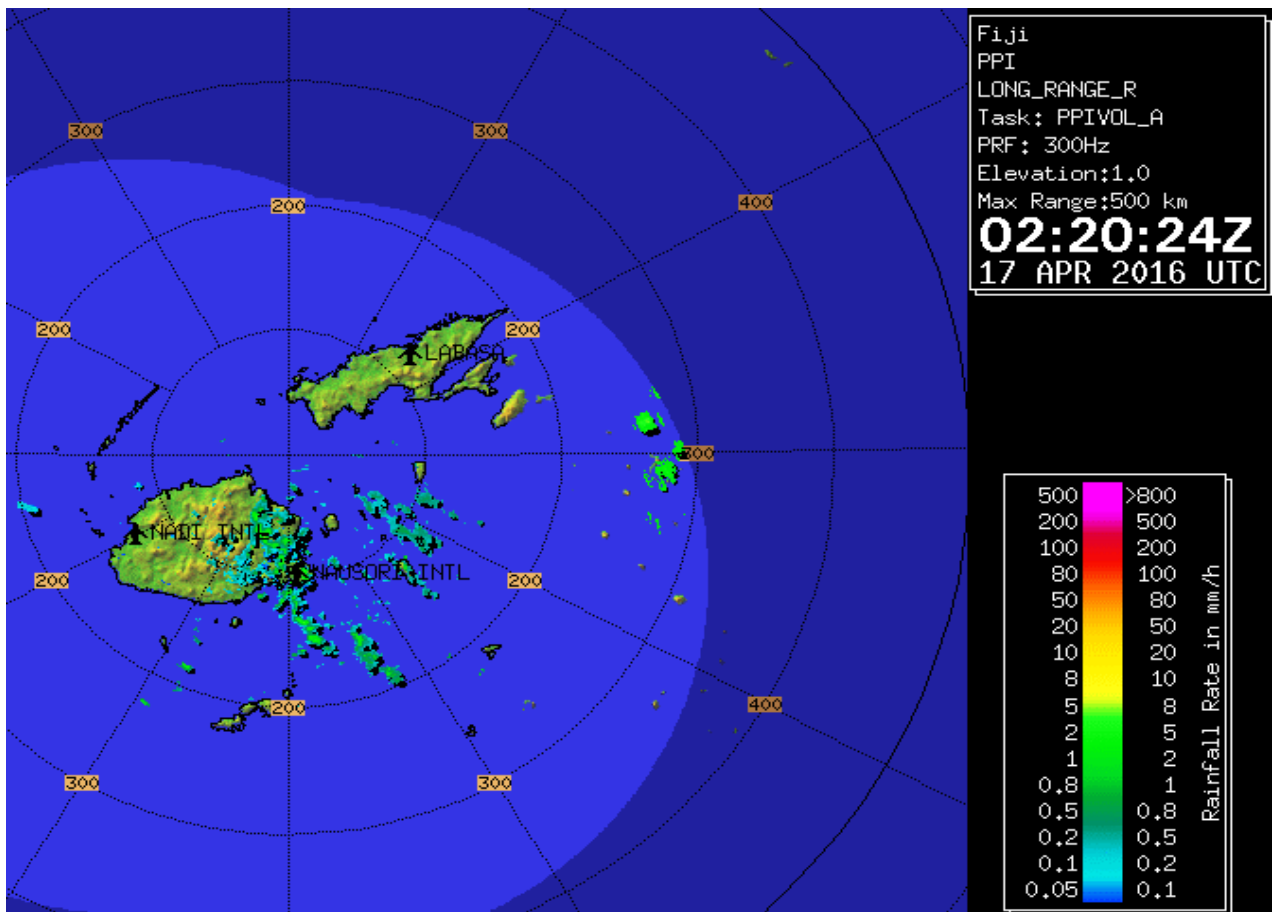


Figure 2: Radar Image at 02.20pm on Sunday 17<sup>th</sup> April 2016.



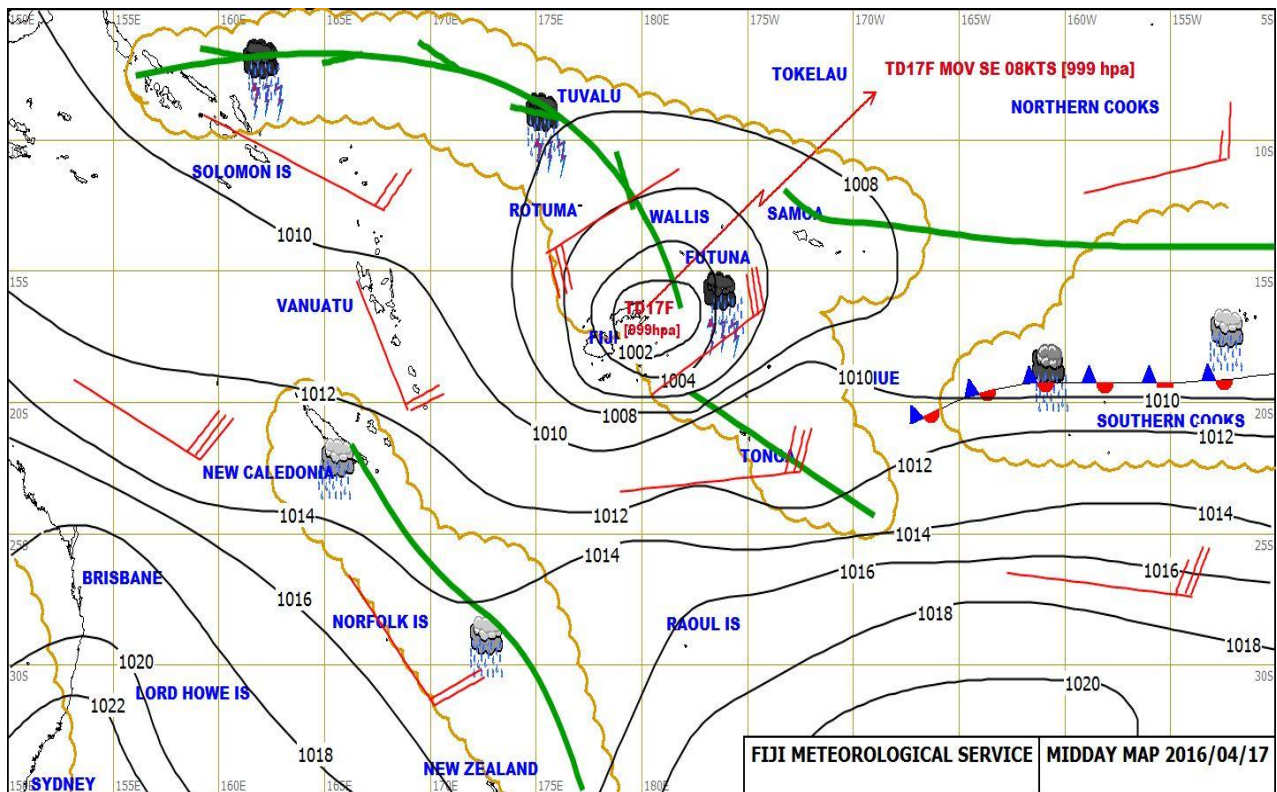


Figure 3: Mean Sea Level Weather Map issued by RSMC at mid-day on Sunday 17<sup>th</sup> April 2016.

**Significant rainfall recorded from 9am yesterday to 9am today.**

Location	Rainfall (mm)
Matei Airport	357
Wairikicake	252
Dreketilailai	238
Dewela	221
Udu Point	211
Nayarabale	205
Rotuma	154
Savusavu Airport	135
Koro Island	132
Monasavu	121
Nabouwalu	110
Navolau	84
Nabukaluka	82
Nayavu	79
Penang Mill	75
Lakeba	73
Lomaivuna	70
Nausori Airport	64
RKS	61
Other sites	Less than 60

Table 1: Some significant rainfall recorded from 9am Saturday 16<sup>th</sup> to 9am Sunday 17<sup>th</sup> April 2016.

The general public is advised that to remain alert and prepared at all times. Furthermore, take forecast, warnings and advisories seriously and make timely and informed decision(s). Keep updated with the latest weather bulletins and take alerts and warnings seriously when they are issued.

For more details and the latest on weather, please contact the Tropical Cyclone Warning Centre on 6736006, 9905376 or visit the Fiji Meteorological Service's website, [www.met.gov.fj](http://www.met.gov.fj)

**ENDS.**



**R KUMAR**

Director of Meteorology

*for* Permanent Secretary Infrastructure & Transport