



MEDIA RELEASE No 3

10am Saturday 17th October, 2015.

TROPICAL DEPRESSION 02F

The Tropical Depression 02F was located near 14.0 degree South latitude and 177.7 degree East longitude or about 220km Southwest of Rotuma and about 450km North-northwest of Nadi at 6am this morning. It has a central pressure of 1002hPa and it is currently moving Southwest at 10km/hr. On the projected path, the system is expected to weaken as it passes to the far west of Fiji. It poses no direct threat to the country and has a moderate probability to develop into a tropical Cyclone in next 12 to 24 hours.

Rain bands associated with the Tropical Depression 02F are expected to continue affecting the country today and gradually start easing later tomorrow. A heavy rain warning is still in force for the whole of Fiji.

For whole of Fiji: Periods of rain, heavy at times with a few thunderstorms continuing today and heavy rain easing overnight.

For Rotuma: A strong wind warning remains in force for Rotuma waters.

A strong wind warning is currently in force for land areas of Rotuma, Lau, Lomaiviti, Yasawa and Mamanuca group, Vanua Levu, Eastern half of Viti Levu, Taveuni and nearby smaller islands.

These areas can expect strong east to southeast winds with average speeds of 40 to 50km/hr and gusts to 65km/hr.

A strong wind warning is also in force for ALL Fiji waters.

Mariners should expect strong east to southeast winds with speeds of 20 to 25knots and upto 30knots through the passages. Rough seas, very rough through the passages. Moderate southeast swells.

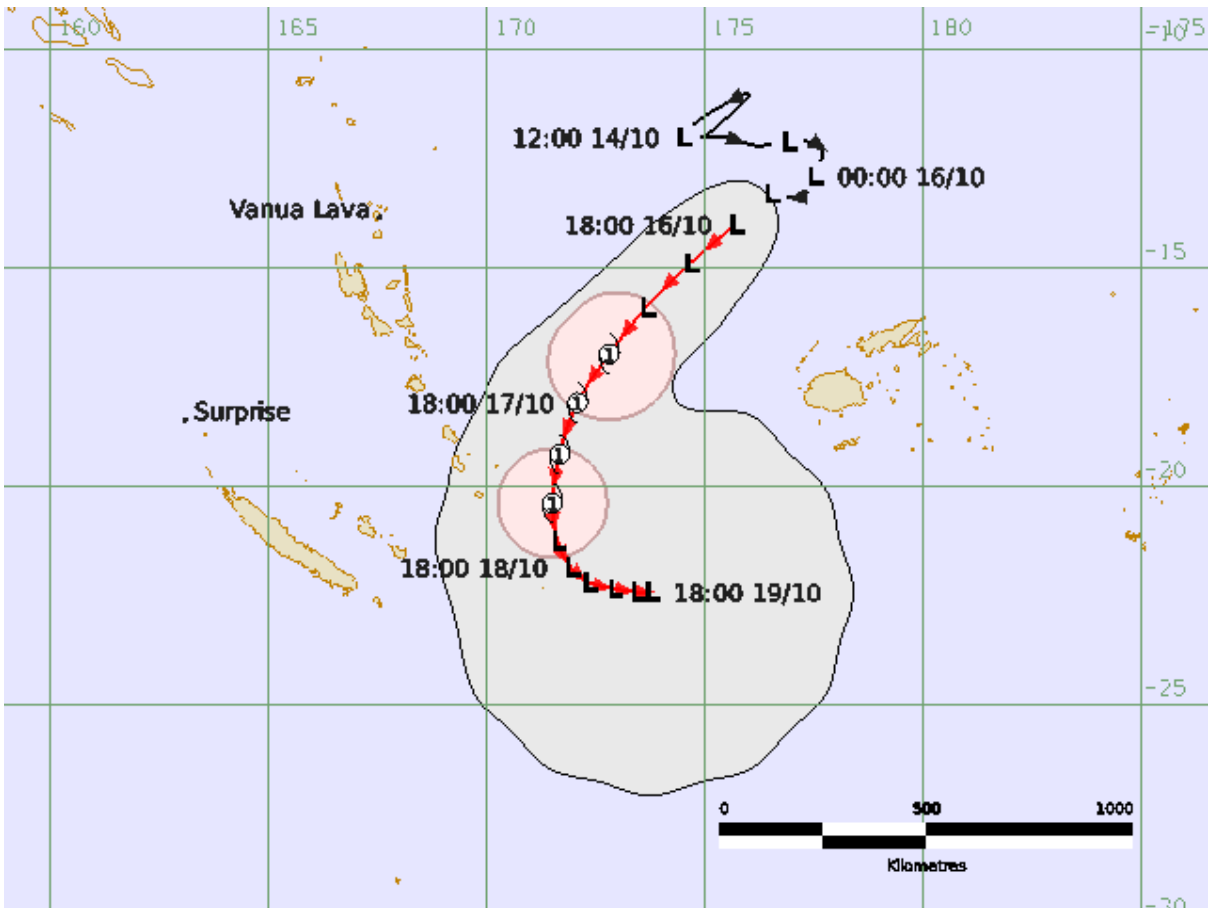


Fig 1: Tropical depression 02F Uncertainty Track Map at 6am on Saturday 17th October, 2015 (Times in UTC on the map).

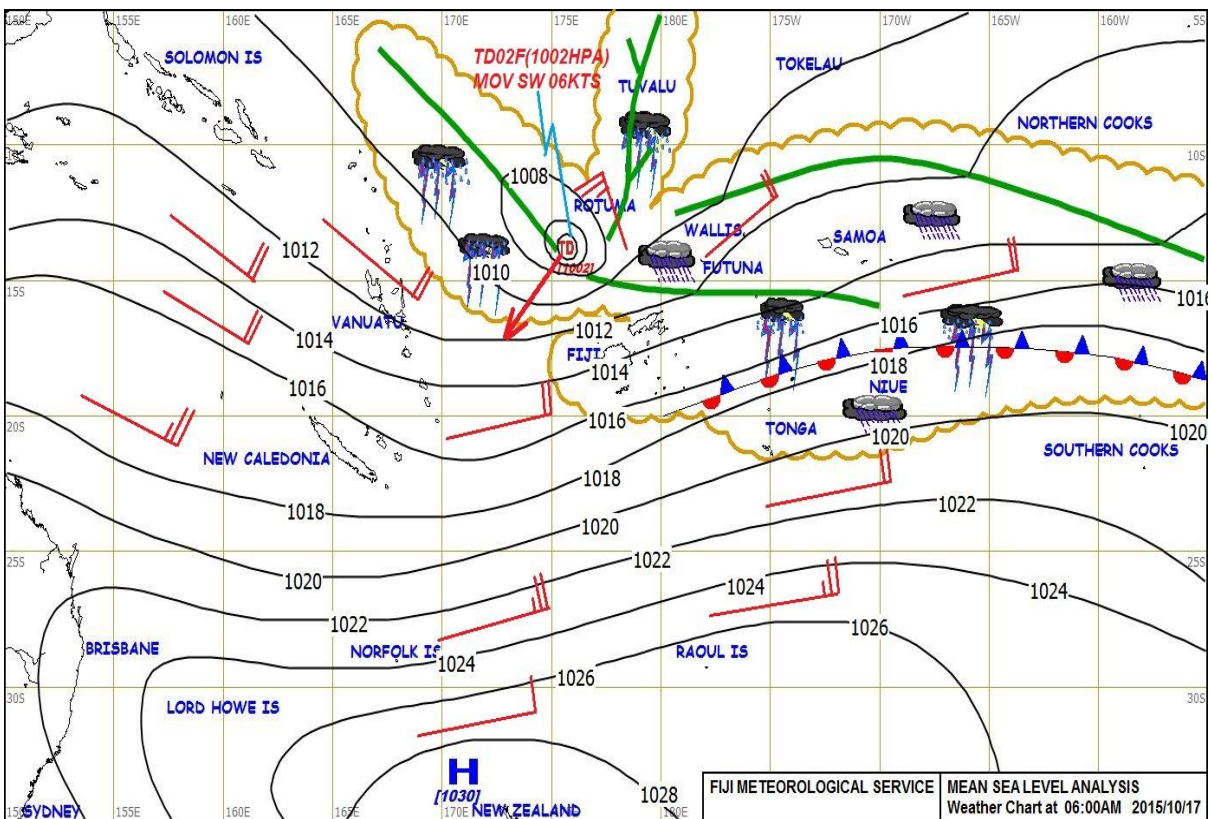


Fig 2: Mean Sea-Level Pressure chart issued from RSMC Nadi at 6am on Saturday 17th October, 2015.

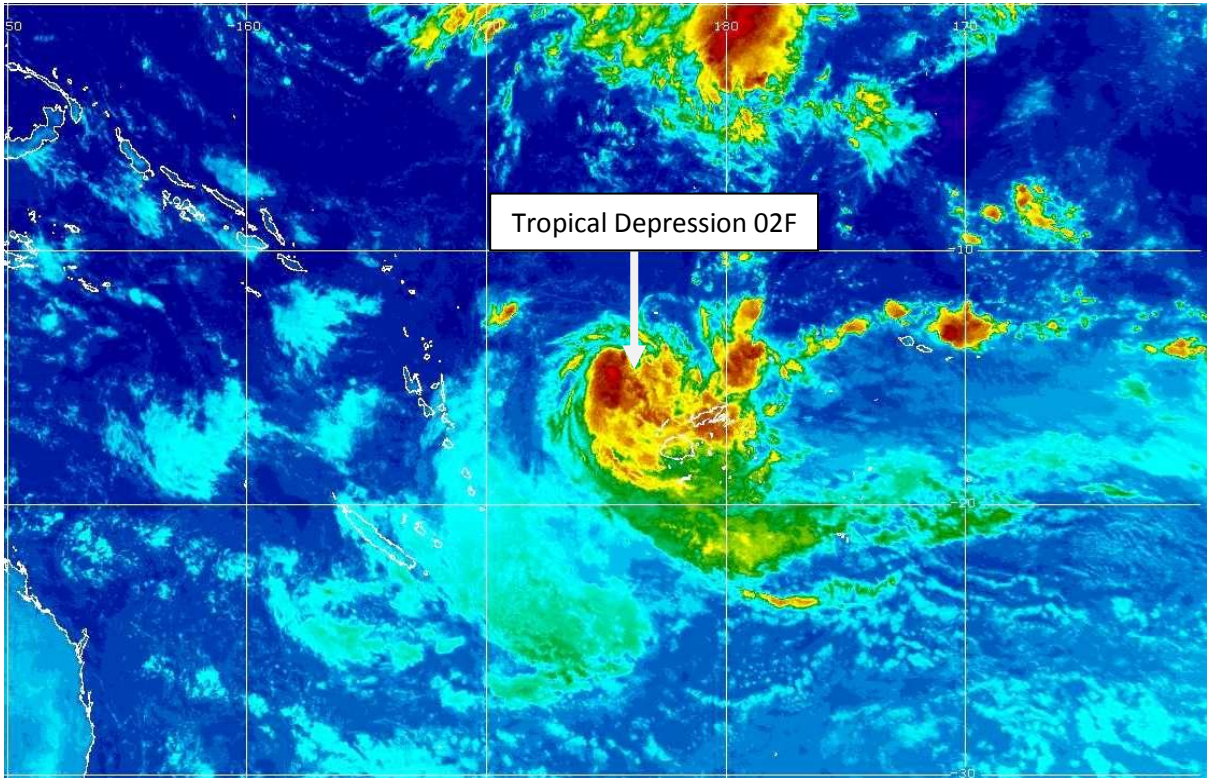


Fig 3: Colourised Infrared satellite imagery at 6.32am on Saturday 17th October, 2015.

- The white arrow points to the centre of the system.
- The red and black colour on the satellite picture above is indicative of the area of heavy rainfall in a rain band.

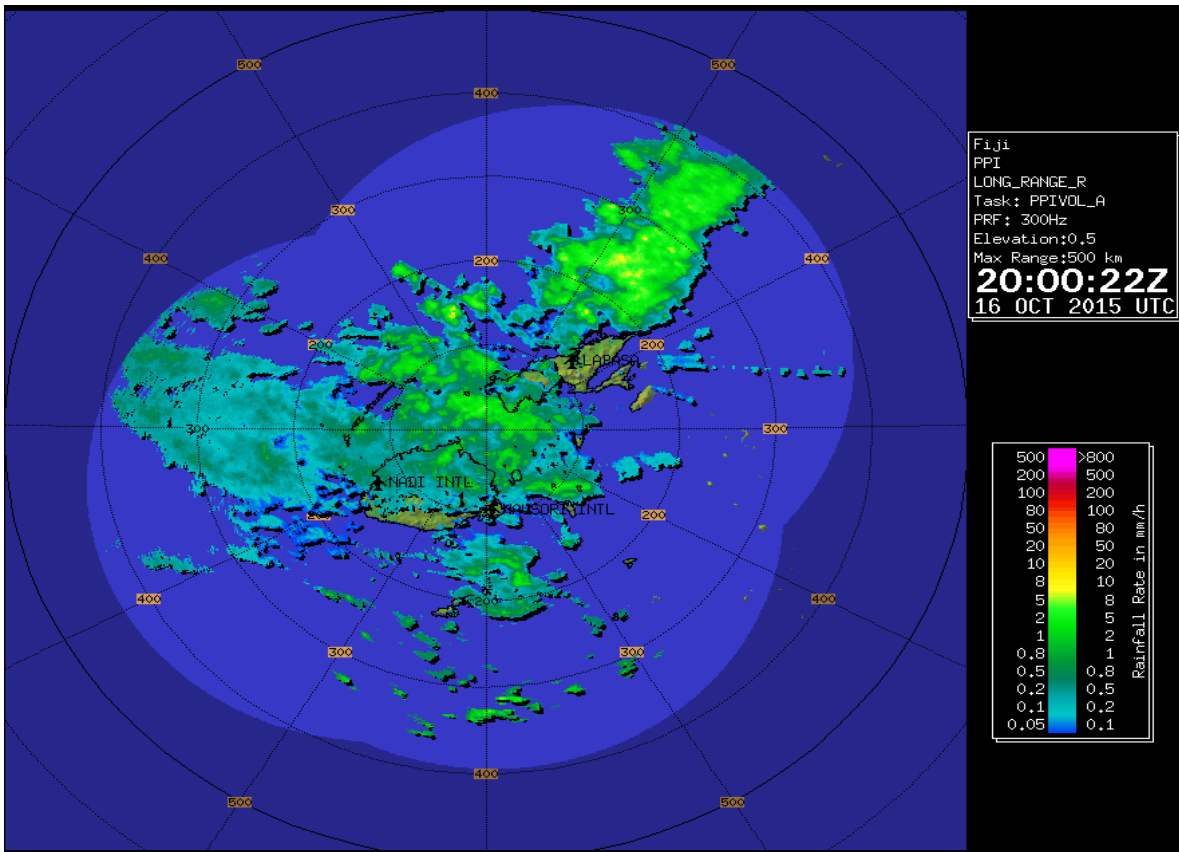


Fig 4: Composite radar image from Labasa, Nadi and Nausori radar at 8am today indicating the rain bands already affecting Fiji.

| Observations | 24 Hour Rainfall (mm) (9am yesterday until 9am this morning) |
|------------------------|-----------------------------------------------------------------|
| Monasavu | 144.3 |
| Penang Mill | 95.0 |
| Dobuilevu | 60.5 |
| Seaqqa | 59.0 |
| Savusavu | 57.3 |
| Lodoni | 54.0 |
| Dreketi and Nadarivatu | 42.5 |
| Labasa Mill | 40.5 |
| Navua | 35.0 |
| Udu Point | 34.5 |

Table 1: Some significant rainfall in last 24 hours around the country.

| Observations | Wind Direction and Speed (Knots) |
|--------------|----------------------------------|
| Ono-i-lau | 080/25 |
| Matuku | 070/25 |
| Vanuabalavu | 090/22 |
| Viwa | 090/20 |
| Yasawa | 100/20 |
| Udu Point | 090/15 |

Table 2: Some wind observation at 9am this morning around the country.

It is advisable that all communities remain prepared at all times and keep updated with the latest weather bulletins.

For more details and the latest on weather, please contact the Tropical Cyclone Warning Centre on 6736006, 9905376 or visit the Fiji Meteorological Service's website, www.met.gov.fj

ENDS.



Ravind Kumar
 Director, Fiji Meteorological Service
 for Permanent Secretary Infrastructure & Transport