



**FIJI METEOROLOGICAL SERVICES
GOVERNMENT OF REPUBLIC OF FIJI**

MEDIA RELEASE No.48

3pm, Tuesday 06 March 2018

TD09F MOVING FURTHER AWAY FROM THE GROUP

Tropical Disturbance (TD09F) has been upgraded to Tropical Depression as of last evening when it was located to the far west-northwest of Fiji over open waters and poses no direct threat to Fiji Group.

TD09F was located about 15.4 degrees latitude south and 170.1 degrees longitude east or about 325km northeast of Prot Vila at 3pm this afternoon and is moving west towards Central Vanuatu at 9km/hr. It is expected to further intensify and has moderate to high chance of developing into a tropical cyclone in next 48 hours.

However, the associated trough of low pressure and rain bands continues to affect the group and following warnings and alert are currently in force:

1. A “**Heavy Rain Warning**” remains in force for Rotuma, Vanua Levu, Taveuni and nearby smaller islands, Northern Lau Group and Yasawa and Mamanuca Groups;
2. A “**Flood Alert**” remains in force for all low lying areas, small streams and areas adjacent to major rivers of Vanua Levu and Taveuni;
3. A “**Strong Wind Warning**” remains in force for land areas of Yasawa and Mamanuca Group; and
4. A “**Strong Wind Warning**” remains in force for all Fiji and Rotuma Waters.

Strong northerly winds with average speed of 45km/hr and gusting to 60km/hr over Yasawa and Mamanuca Group whilst moderate to fresh winds, gusty at times elsewhere. Strong winds easing by tomorrow.

Expect occasional rain heavy at times with few squally thunderstorms over Vanua Levu, Taveuni and nearby smaller islands, Northern Lau Group and Mamanuca Group with rain gradually easing to showers from tonight. Elsewhere some showers with heavy falls likely especially in the afternoon or evening can be anticipated.

For the rest of the Group, cloudy periods with some showers with heavy falls and thunderstorms in the afternoon or evening. Localised heavy falls may lead to flash flooding and flooding of low-lying areas.

Mariners can expect northerly winds 20 to 30 knots over Yasawa and Mamanuca and Southwest Viti Levu Waters with rough seas and poor visibility in areas of heavy rain and thunderstorms.

For rest of Fiji Waters, expect north to northeast winds 20 to 25 knots with rough seas and poor visibility in areas of heavy rain and thunderstorms.

The warnings and alerts currently in place will be gradually downgraded as the weather improves and will be closely monitored for any development. Subsequent updates will be released if any rapid changes in the situation occur. Members of the public advised to be alert, take heed of warnings seriously and take appropriate precaution if necessary. Moreover, remain updated with the latest weather information.

For more details and the latest on weather, please contact the National Weather Forecasting Centre on 6736006, 9905376 or visit the Fiji Meteorological Service's website, www.met.gov.fj. For heavy rain warning: http://www.met.gov.fj/aifs_prods/20014.txt, For Flood Warning: http://www.met.gov.fj/aifs_prods/20016.txt and our latest updates can also be followed on the Fiji Meteorological Service official Facebook page.

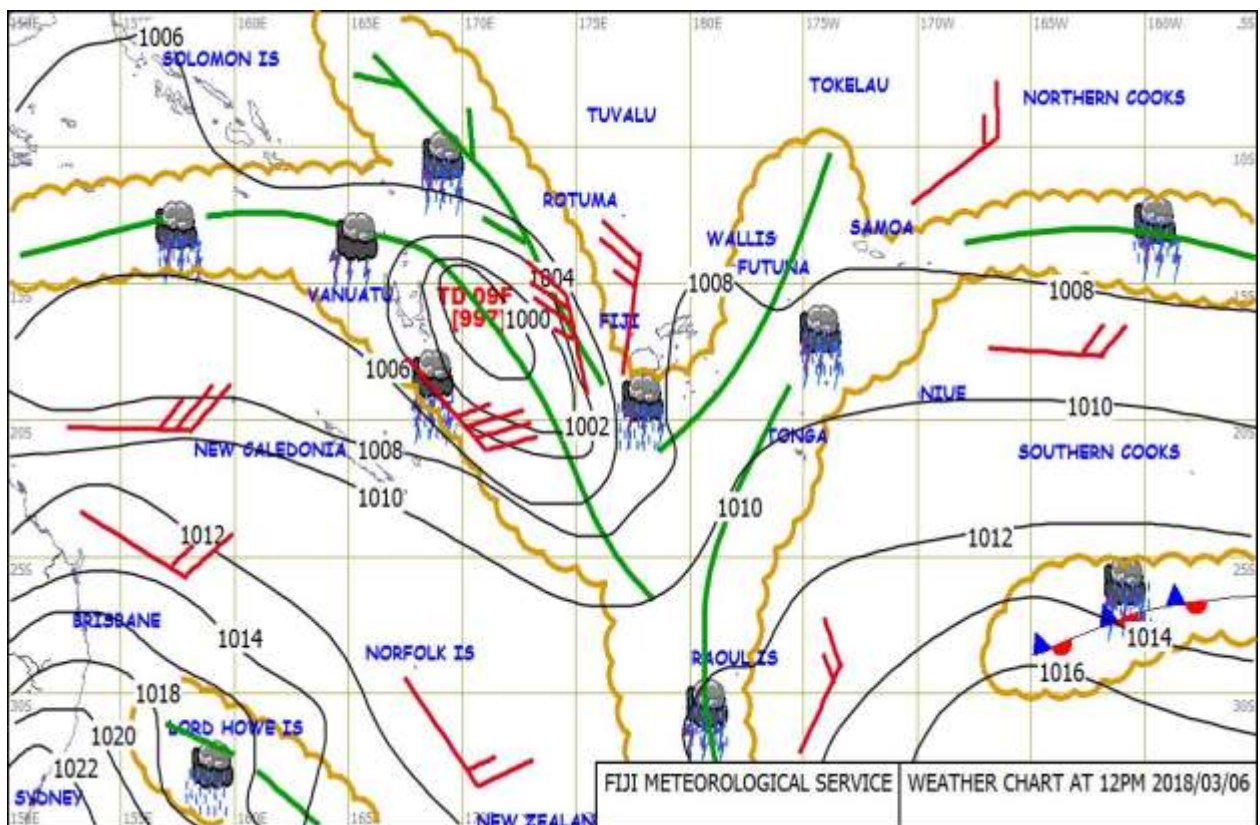


Figure 1: Weather Map at 12pm today on 06 March 2018. TD09F located to the far northwest of the Group.

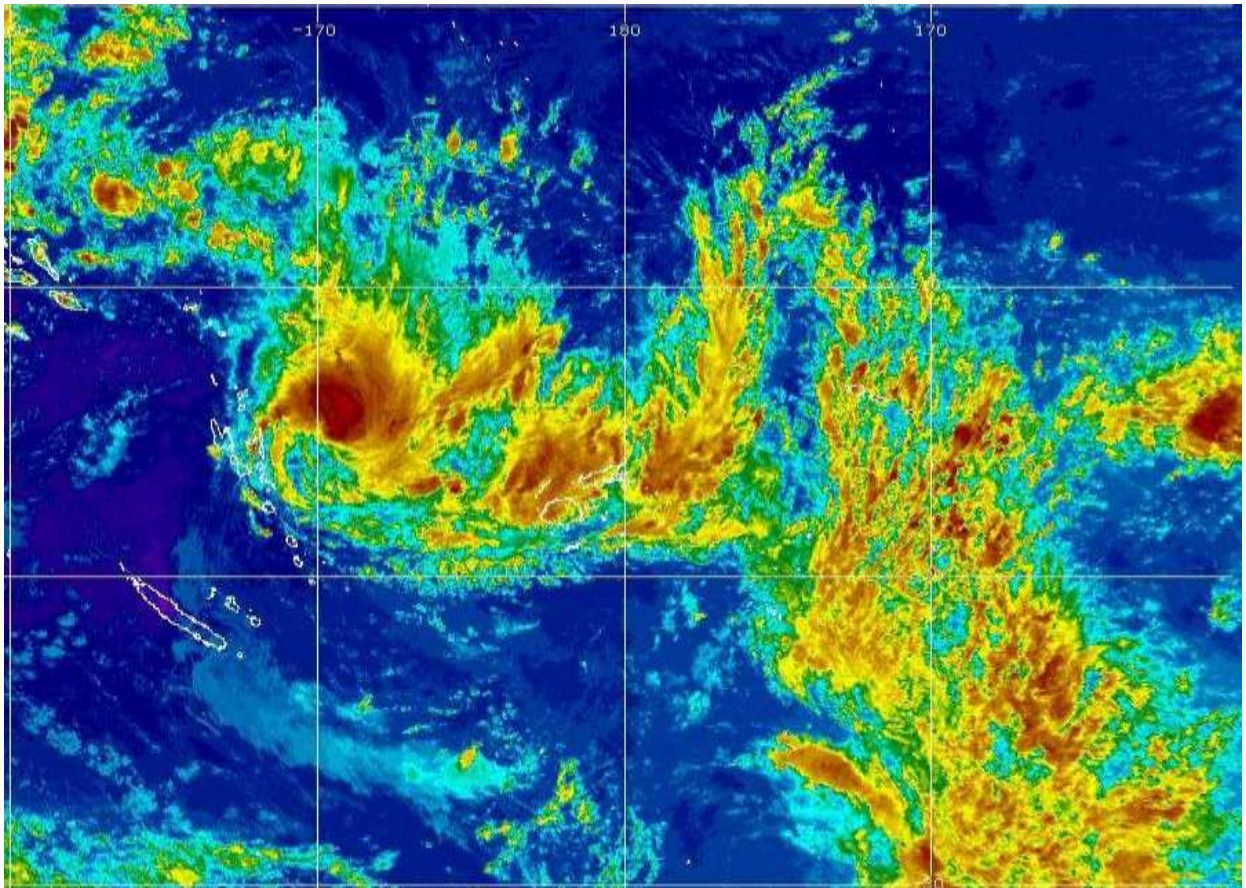


Figure 2: Satellite image at 12pm today on 06 March 2018 with rain bands still affecting the country.

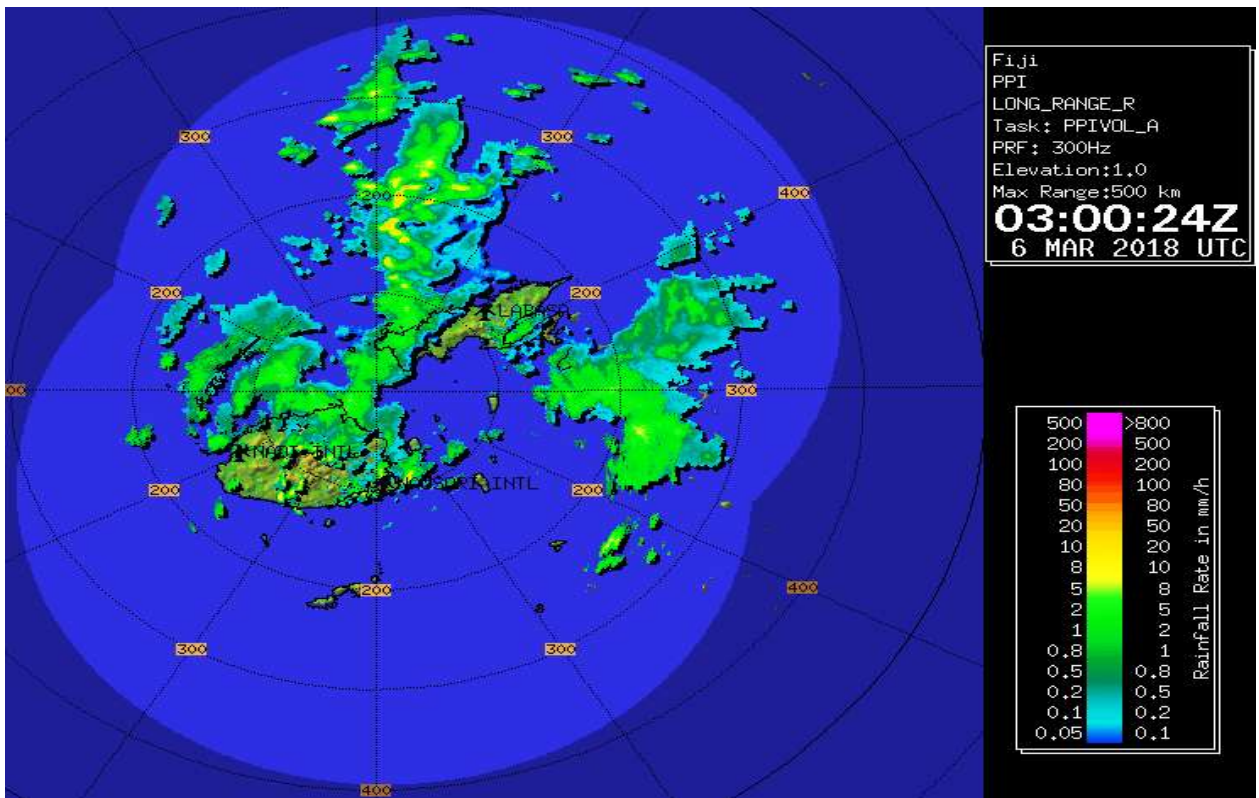


Figure 3: Radar image at 3pm today on 06 March 2018 with heavy rain still affecting parts of the country.

Rakiraki Catchment	Threshold Level		WL 11am	Remarks
	Alert (m)	Warning (m)		
<i>Vatukacevaceva</i>	1.0	1.5	0.79	Decreasing
<i>Rakiraki Town</i>	1.5	2.0	1.85	Decreasing
Sigatoka Catchment	Alert (m)	Warning (m)		
<i>Keiyasi</i>	4.0	5.0	1.15	Decreasing
<i>Sigatoka Bridge</i>	3.5	4.5	1.02	Normal
Semo Catchment	Alert (m)	Warning (m)		
<i>Tuva</i>	3.5	4.5	1.56	Decreasing
Ciri @ below Confluence	2.0	2.5	1.76	Normal

Table 1: Water Level Update at 12pm today 06 March 2018 with water levels in the rivers are slowly receding.

Selected Sites	Rainfall at Selected Sites
Labasa	60mm
Savusavu	56mm
Seaqaqa	34mm

Table 2: Significant rainfall at selected sites from 9am yesterday to 9am this morning on 06 March 2018.

ENDS