



**FIJI METEOROLOGICAL SERVICES
GOVERNMENT OF REPUBLIC OF FIJI**

MEDIA RELEASE No.45

4pm, Saturday 03 March 2018

HEAVY RAIN AND FLOOD ALERTS IN FORCE

A trough of low pressure with associated cloud and rain remains slow moving over Fiji and expected to continue affecting the group till early next week.

A tropical low pressure systems lies within this trough to the northwest of Fiji and is expected to move southwards towards the Group. As the trough and the associated tropical low pressure moves closer to the Group, anticipate occasional rain increasing to periods and becoming frequent and heavy with squally thunderstorms over most places from tomorrow. Wet weather conditions is likely to continue into early next week as the trough is anticipated to remain slow moving in the vicinity of Fiji.

There is high chance of rainfall exceeding 100mm in 24 hours over most places. With the ground already saturated and with predicted more rain in the coming days, the chance of flooding of low lying areas are high in the coming days especially in localised heavy rainfall.

With the high tide still around 2 meters and water in the rivers are at medium to high flows, predicted more rain further elevates the chances of flooding at catchment level in the coming days. In anticipation of the predicted rain, the following alerts and warnings remain in force:

1. A “***Strong Wind Warning***” remains in force for all Fiji Waters;
2. A “***Heavy Rain Alert***” remains in force for whole of Fiji.
3. A “***Flood Warning***” remains in force for all low lying areas and small streams for whole of Fiji.

The “***Heavy Rain Alert***” will be upgraded to “***Heavy Rain Warning***” this evening and the situation will be monitored very closely.

For all Fiji Waters, mariners can expect Northerly winds 20 to 25 knots, gusting to 30 knots with rough seas and poor visibility in areas of heavy rain and thunderstorms.

Members of the public living in flood and landslide prone areas are once again reminded to remain alert and take appropriate precaution if necessary. All communities are advised to remain updated with the latest weather information and take alerts and warnings seriously as they are issued.

For more details and the latest on weather, please contact the National Weather Forecasting Centre on 6736006, 9905376 or visit the Fiji Meteorological Service's website, www.met.gov.fj, for heavy rain warning: http://www.met.gov.fj/aifs_prods/20014.txt, http://www.met.gov.fj/aifs_prods/20016.txt and our latest updates can also be followed on the Fiji Meteorological Service official Facebook page.

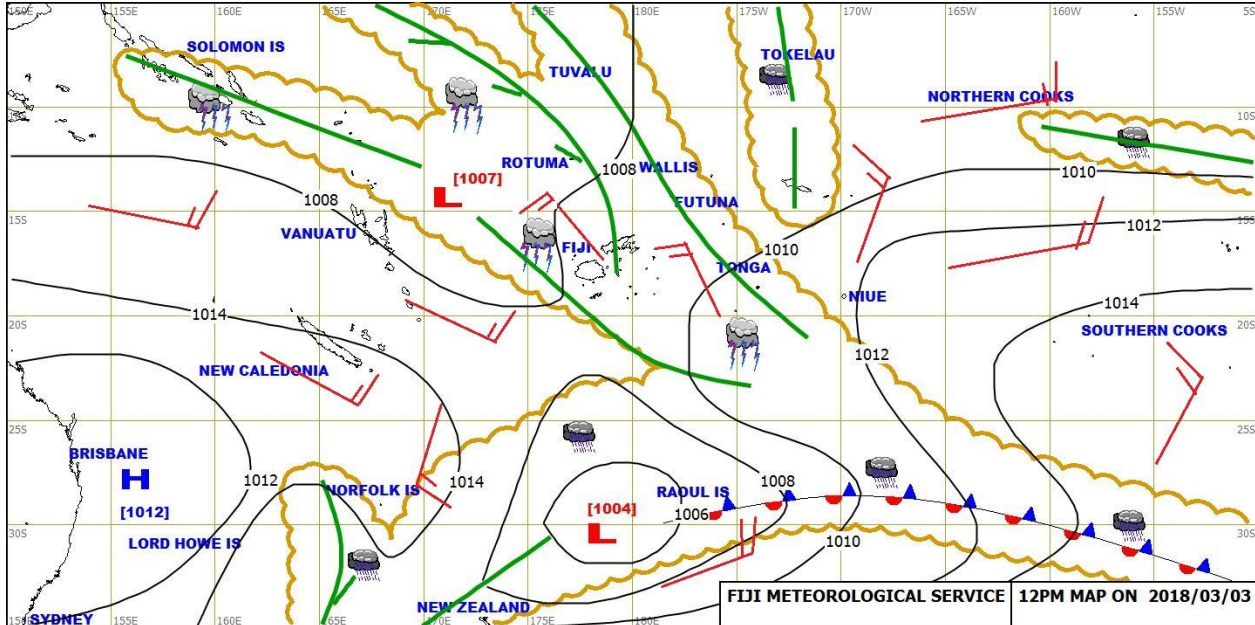


Figure 1: Weather Map at 12pm today on 03 March 2018.

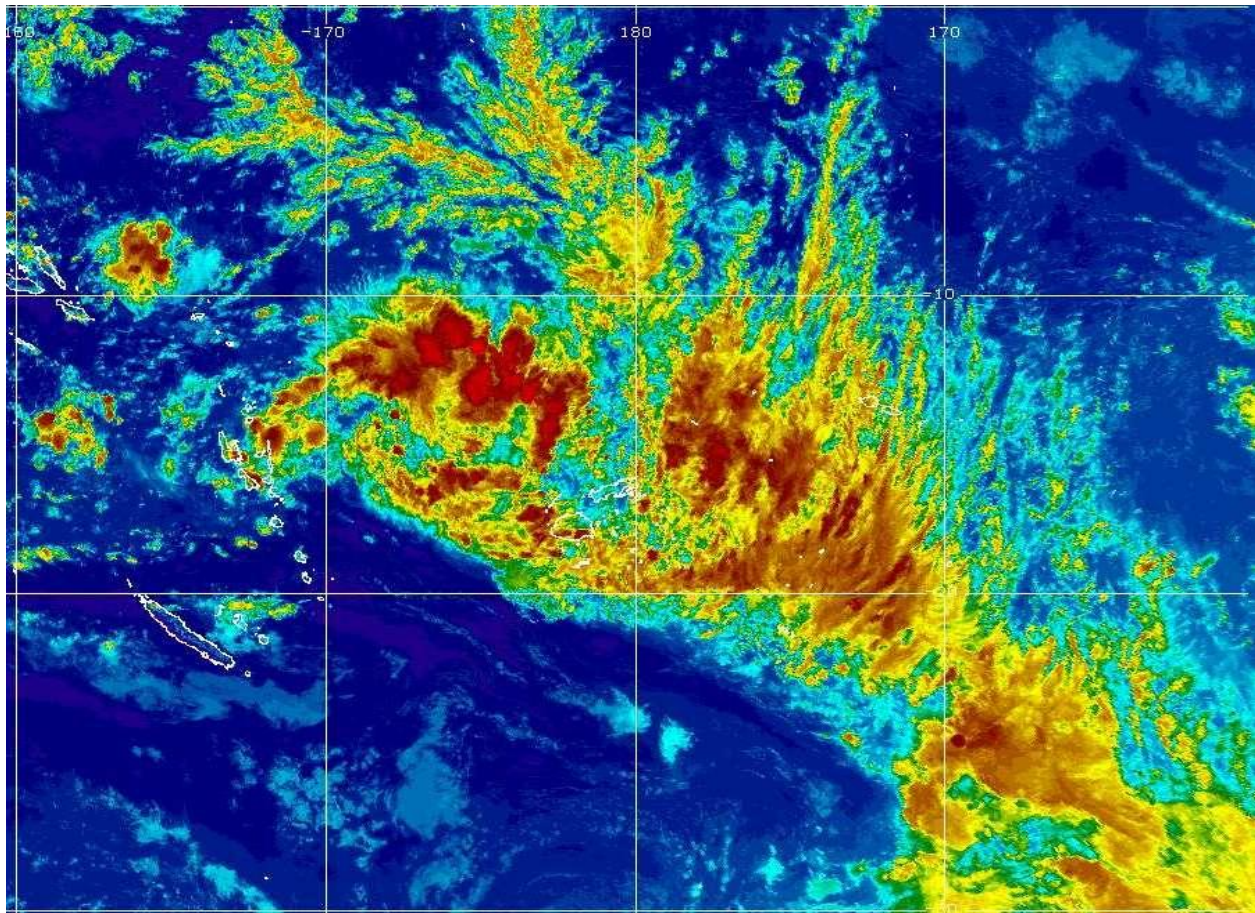


Figure 2: Satellite image at 2pm today on 03 March 2018.

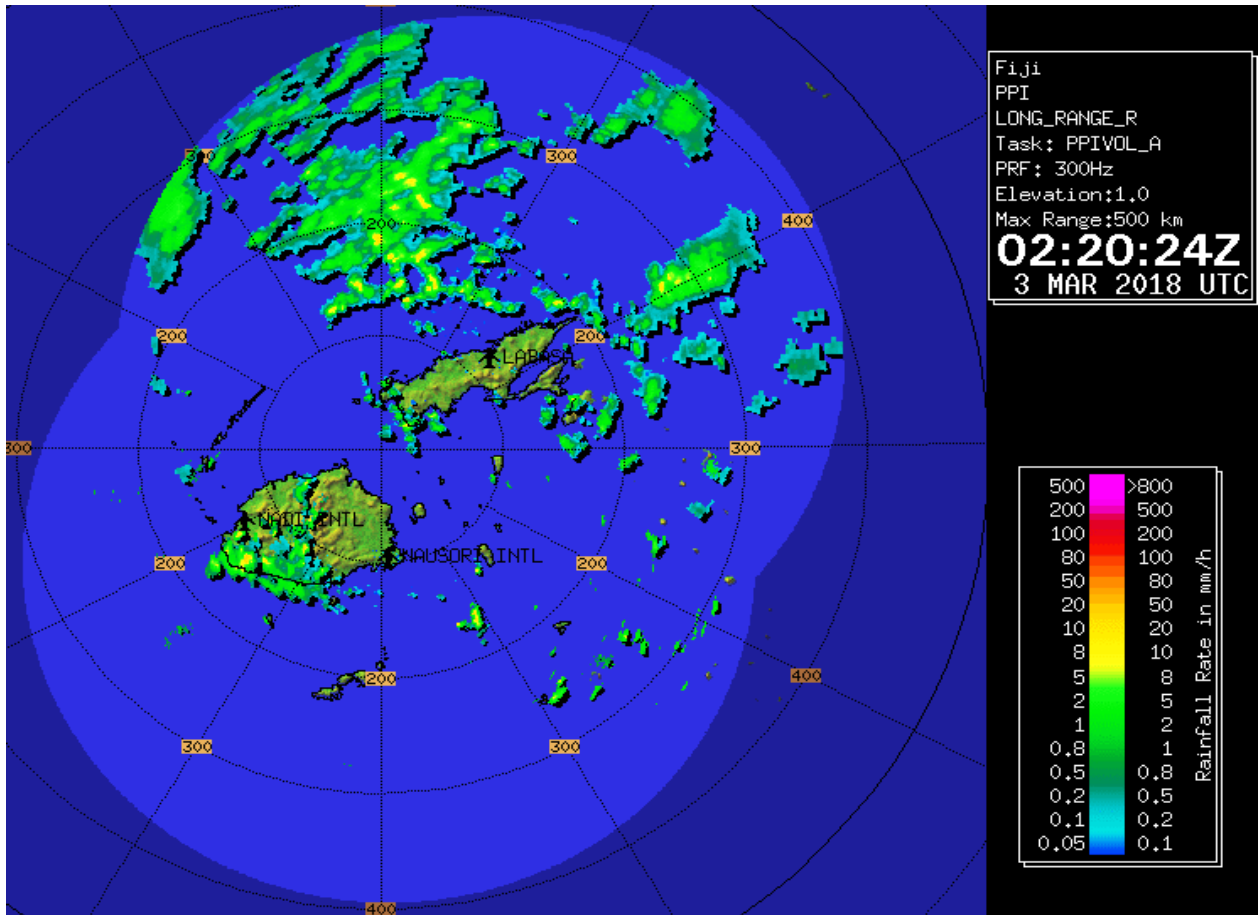


Figure 3: Radar image at 2.20pm today on 03 March 2018.

	Threshold Level		WL 4pm	Remarks
	Alert (m)	Warning (m)		
Rakiraki Catchment	Alert (m)	Warning (m)		
<i>Rakiraki Town</i>	1.5	2.5	1.7	Decreasing
<i>Vatukacevaceva</i>	1.0	1.5	0.79	Decreasing
Ba Catchment				
FSC Mill	2.5	3.5	0.822	Decreasing
Navua Catchment	Alert (m)	Warning (m)		
<i>Sabata</i>	6.0	8.0	3.28m	decreasing

Table 2: Water Level Update at 4pm today on 03 March 2018.

Ends...

