



**FIJI METEOROLOGICAL SERVICES
GOVERNMENT OF THE REPUBLIC OF FIJI**

MEDIA RELEASE No.30

6pm, Thursday 08 February 2018

HEAVY RAIN AND STRONG WINDS TO EASE AS TD07F MOVES AWAY

Tropical Disturbance (TD07F) was located near 16.4 degrees south latitude and 178.4 degrees east longitude or about 70km north-northwest of Labasa or 100km west-northwest of Udu Point at 6pm today.

TD07F has pick up the speed and moved faster than anticipated. It is currently moving east-northeast at 30km/hr and expected to pass very close to Vanua Levu this evening. On the current track, TD07F is anticipated to lie east of Udu Point tomorrow and likely to further intensify into a Tropical Depression as it moves towards Samoa.

However, the associated trough, cloud, rain, fresh to strong and gusty winds are expected to affect the parts of the Group until tomorrow and the following *Warnings* and *Alerts* remain in force but will be gradually lift from tomorrow:

1. A “**Heavy Rain Warning**” remains in force Yasawa and Mamanuca Group, Vanua Levu, Taveuni and nearby smaller islands, Lomaiviti and Lau Groups.
2. A “**Strong Wind Warning**” remains in force for Yasawa and Mamanuca Group, Vanua Levu, Taveuni and nearby smaller islands and the northern Lau Group.
3. A “**Heavy Rain Alert**” remains in force for the rest of Fiji.
4. A “**Strong Wind Warning**” remains in force for the Land Areas and Waters of Rotuma.
5. A “**Strong Wind Warning**” remains in force for northern Vanua Levu and the Lau Waters, Koro Sea, Vatu-i-ra and Kadavu passages.
6. A “**Flood Alert**” remains in force for low-lying areas and small streams for Vanua Levu, western parts of Viti Levu and now in force for Vatukaceveceva downstream to Rakiraki Town and downstream of Nasivi to Tavua Town.

For Yasawa and Mamanuca Group, Vanua Levu, Taveuni and nearby smaller islands, Lau, and Lomaiviti Group, expect periods of rain, heavy times and squally thunderstorms with rain easing to showers tomorrow. Strong west to northwesterly winds with speeds of 40km/hr to 50km/hr, gusts to 65km/hr and gradually becoming moderate to fresh later tomorrow.

For the Rest of Fiji, expect some showers and isolated thunderstorms over southern and eastern Viti Levu, Kadavu and nearby smaller islands. Elsewhere, showers especially in the afternoon or evening showers with isolated heavy falls.

Over Rotuma, expect periods of rain and squally thunderstorm, strong north to northwest winds 40km/hr to 55km/hr and gusting to 70km/hr.

For northern Vanua Levu and the Lau Waters, Koro Sea, Vatu-I-Ra and Kadavu passage, northwesterly winds 20 to 25 knots, gusts to 35knots with rough to very rough seas and moderate

northwesterly swells. For the rest of Fiji Waters, expect east to southwest winds 15 to 20 knots and gusty at times with moderate to rough seas and moderate northerly swells.

The chance of flash flooding and flooding of low lying areas still remains high in areas of localized heavy falls especially where the ground is very saturated.

The situation will be closely monitored for any new developments and all communities are advised to remain prepared at all times, especially when we are in the tropical and wet season and weather can change rapidly over short period.

For more details and the latest on weather, please contact the National Weather Forecasting Centre on 6736006, 9905376 or visit the Fiji Meteorological Service's website, www.met.gov.fj. For Heavy Rain Warning: http://www.met.gov.fj/aifs_prods/20014.txt. For Flood Alert: http://www.met.gov.fj/aifs_prods/20016.txt.

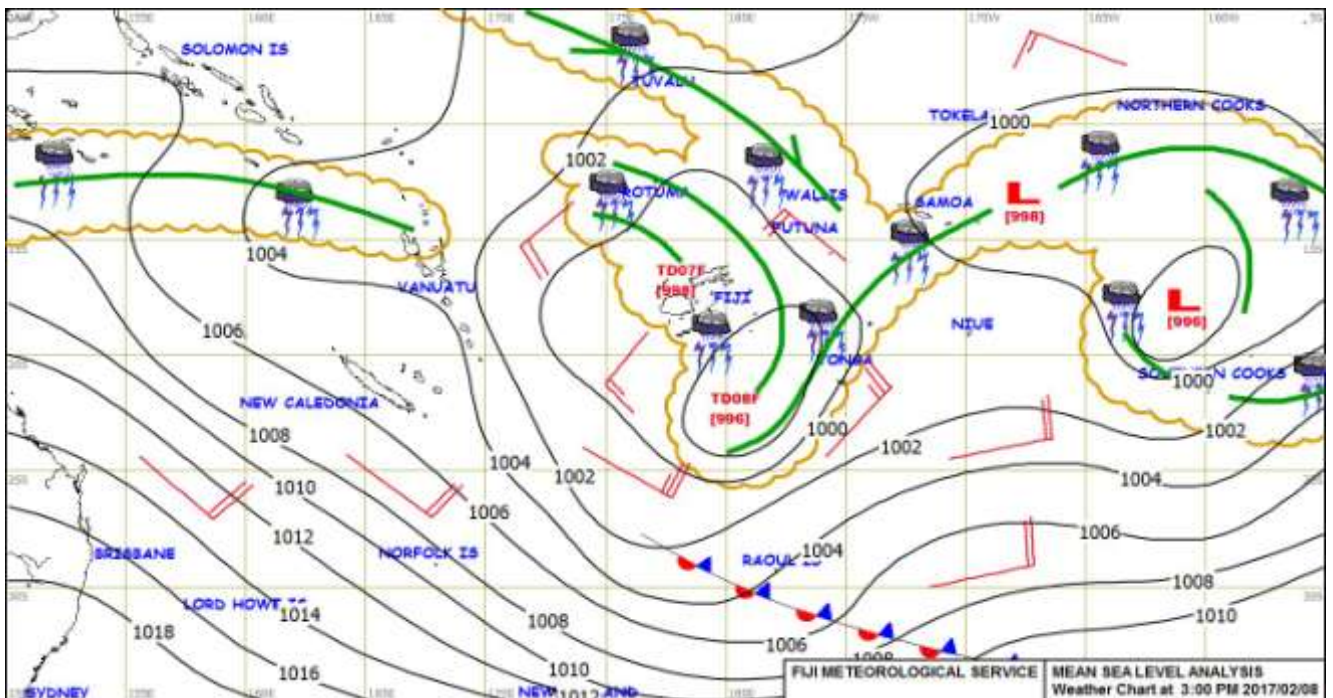


Figure 1: Mean Sea Level Weather Map at 3pm on 08 February 2018.

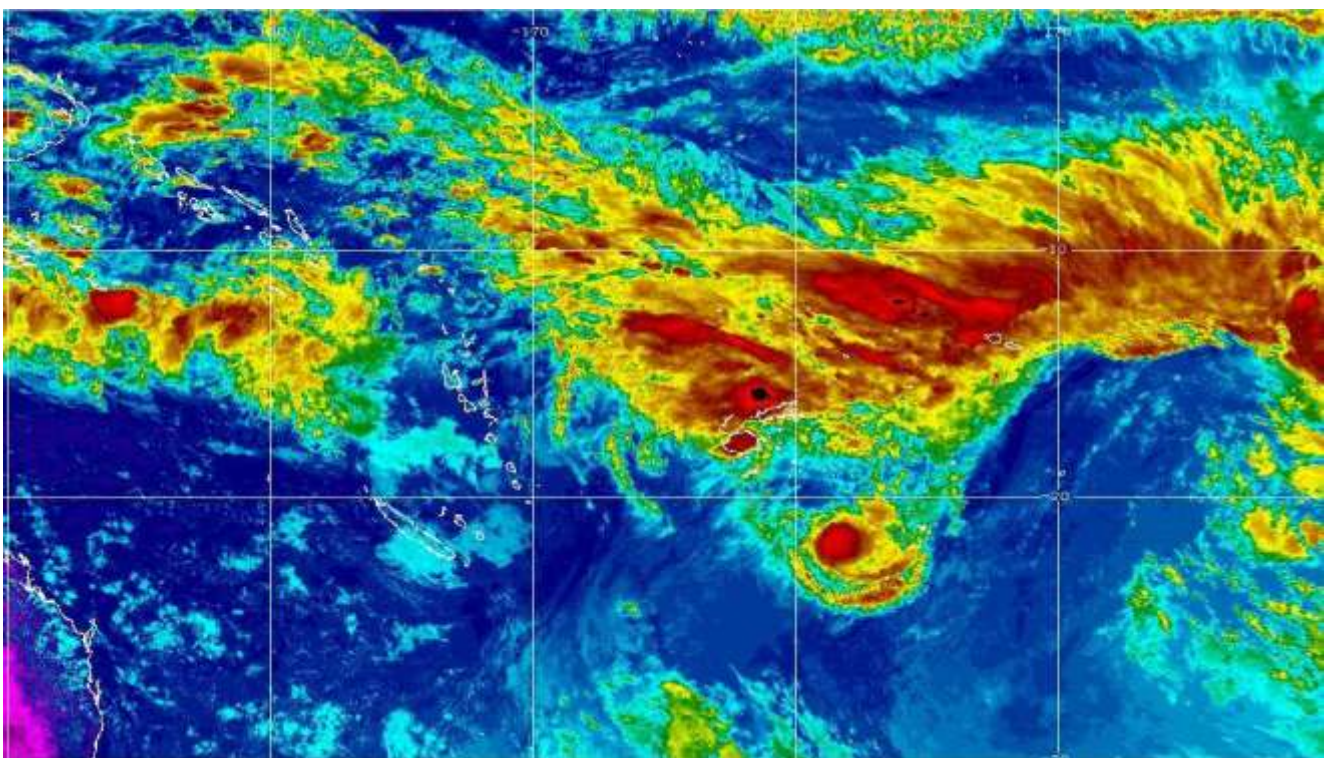


Figure 2: Satellite image at 4.30pm today on 08 February 2018.

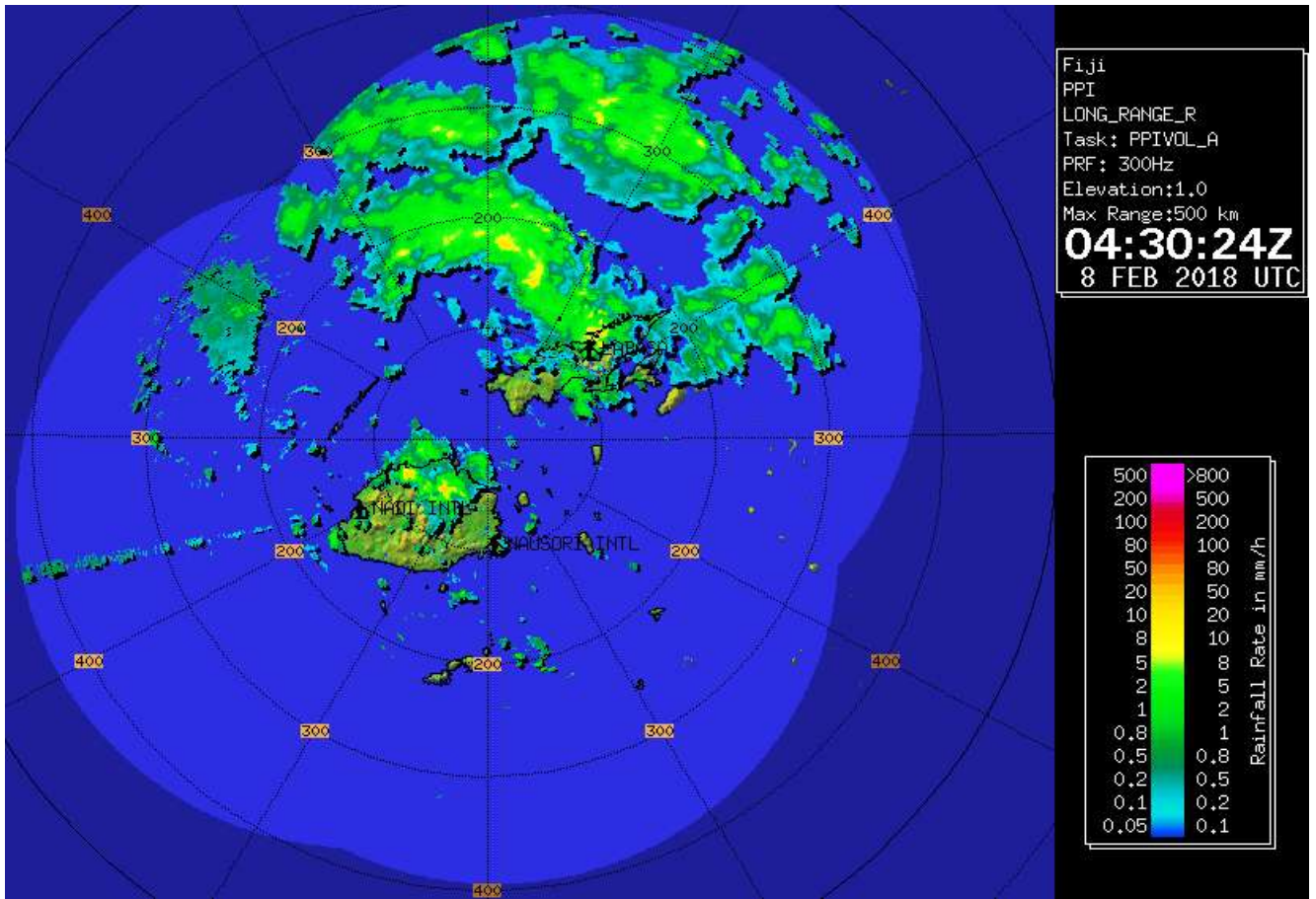


Figure 3: Radar Image at 4.30pm today 08 February 2018 with heavy rain in the northern Viti Levu and Vanua Levu.

Selected Station	Rainfall
Waikubukubu	52mm
Rarawai	41mm
Nayarabale	35mm
Tavua and Dewala	32mm
Toge	31mm
Penang	30mm
Nadarivatu	29mm
Qawa Bridge and Nagado	27mm
Viwa	22mm
Labasa and Lautoka	13mm

Table 1: Rainfall recorded at selected site from 9am yesterday to 9am today, 08 February 2018.

Rewa Catchment	Threshold Level		RF 9am-3pm	WL 3pm	Remarks
	Alert (m)	Warning (m)			
<i>Nabukaluka</i>	4.0	5.0	Nil	0.98	Decreasing
<i>Waimanu</i>	4.0	5.0	Nil	1.90	Decreasing
<i>Nayavu</i>	5.0	8.0	-	0.94	Decreasing
<i>Naqali</i>	2.5	3.5	Nil	0.32	Normal
<i>Nairukuruku</i>	4.0	5.0	Nil	1.65	Decreasing
Navua Catchment	Alert (m)	Warning (m)			
<i>Sabata</i>	4.0	6.0	0.5	1.46	Decreasing
<i>Nabukelevu</i>	3.0	4.0	Nil	1.33	Decreasing
Rakiraki Catchment	Alert (m)	Warning (m)			
<i>Rakiraki Town</i>	1.5	2.5	-		Faulty
<i>Vatukacevaceva</i>	1.0	1.5	0.5	0.78	Decreasing
Sigatoka Catchment	Alert (m)	Warning (m)			
<i>Keiyasi</i>	4.0	5.0	Nil	1.29	Decreasing
<i>Sigatoka Bridge</i>	3.5	4.5		1.15	Decreasing
Semo Catchment	Alert (m)	Warning (m)			
<i>Tuva</i>	3.5	4.5	Nil	1.63	Decreasing
<i>Ciri</i>	1.5	2.5		1.67	Decreasing
Nadi Catchment	Alert (m)	Warning (m)			
<i>Nadi Bridge</i>	2.5	3.5	-	1.31	Normal
<i>Votualevu</i>	3.0	5.0	-	1.70	Normal
<i>Yavuna</i>	3.5	4.5	-	0.5	Normal
<i>Mulomulo</i>	3.0	4.0	-	0.95	Normal
<i>Vatutu @ WAF</i>	1.8	2.5		0.32	Normal
Ba Catchment	Alert (m)	Warning (m)			
<i>FSC Ba</i>	2.0	3.5	-	1.59	Decreasing
<i>Toge</i>	4.0	6.0	Nil	1.86	Decreasing
Tavua Catchment					
<i>Nasivi W/L</i>	2.5	3.5	-	1.29	Decreasing
Labasa Catchment	Alert (m)	Warning (m)			
<i>Dewala</i>	2.5	4.0	27.0	0.96	Decreasing
<i>Dreketilailai</i>	1.5	2.5	1.0	0.96	Decreasing
<i>Qawa Bridge</i>	3.0	4.5	0.5	2.53	Decreasing

Table 2: The Rivers are generally receding with Water Levels either normal or decreasing.

Ends...