



**FIJI METEOROLOGICAL SERVICES
GOVERNMENT OF THE REPUBLIC OF FIJI**

MEDIA RELEASE No.27

5pm, Monday 05 February 2018

TD08F REMAINS SLOW MOVING

Tropical Disturbance (TD08F) was located near 20.0 degrees south latitude and 179.2 degrees east longitude or about 240km south-southeast of Suva at 3pm this afternoon. It remains slow moving and the associated active trough of low pressure, cloud and rain continues to affect most parts of the country. The following *Warnings* and *Alerts* remain in force:

1. A “**Heavy Rain Warning**” remains in force for Western and Northern Viti Levu, Vanua Levu, Taveuni, and nearby smaller Islands, Lau, Yasawa and Mamanuca Groups, Kadavu and nearby smaller islands.
2. A “**Heavy Rain Alert**” remains in force for the rest of Fiji.
3. A “**Strong Wind Warning**” remains in force for the Land Areas and Waters of Rotuma.
4. A “**Strong Wind Warning**” remains in force for land areas of Vanua Levu, Taveuni and nearby smaller Islands and the Lau group.
5. A “**Flood Alert**” remains in force for low-lying areas and small streams of Fiji.

Expect periods of rain, heavy at times and a few thunderstorms over Vanua Levu, Taveuni and nearby smaller islands and the Lau group. Strong winds of 40km/hr to 50km/hr gusting to 65km/hr at times in these areas. Over Rotuma, expect occasional rain and strong north to northwest winds 40km/hr to 55km/hr and gusting to 60km/hr. However, occasional rain, heavy at times and few thunderstorms anticipated over northern and western Viti Levu, Yasawa and Mamanuca group, Kadavu and nearby smaller islands.

For the rest of Fiji, expect occasional showers and thunderstorms with heavy falls likely. Showers could possibly increase to rain as TD07F currently over Vanuatu draws closer to the Group.

Meanwhile, TD07F remains slow moving over Vanuatu and expected to gradually towards the group in the next 24 to 48 hours. It has potential to intensify into a Tropical Depression over Fiji Waters and the chances of developing into a tropical cyclone over next 48 hours is *low to moderate* and increases to *moderate to high* in next 72 hours.

Further development of TD07F will be closely monitored and public will be appropriately advised through alert and warning as system draws closer to the country. All communities are advised to remain prepared, be updated with the latest weather information and take alerts and warnings seriously as and when it is issued.

For more details and the latest on weather, please contact the National Weather Forecasting Centre on 6736006, 9905376 or visit the Fiji Meteorological Service’s website, www.met.gov.fj. For Heavy Rain Warning: http://www.met.gov.fj/aifs_prods/20014.txt. For Flood Alert: http://www.met.gov.fj/aifs_prods/20016.txt.

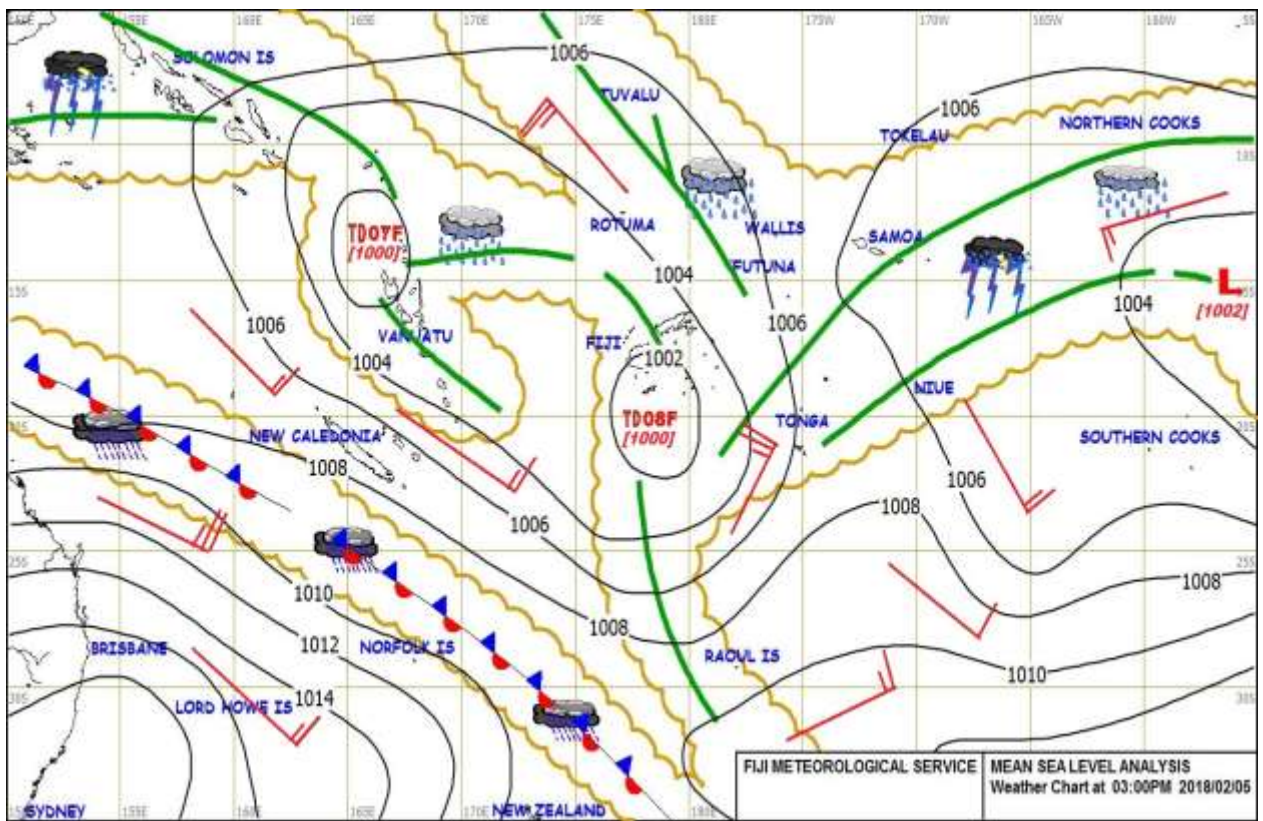


Figure 1: Mean Sea Level Weather Map at 3pm on 05 February 2018 with a TD07F analyzed over northern Vanuatu and TD08F located southern parts of the Group.

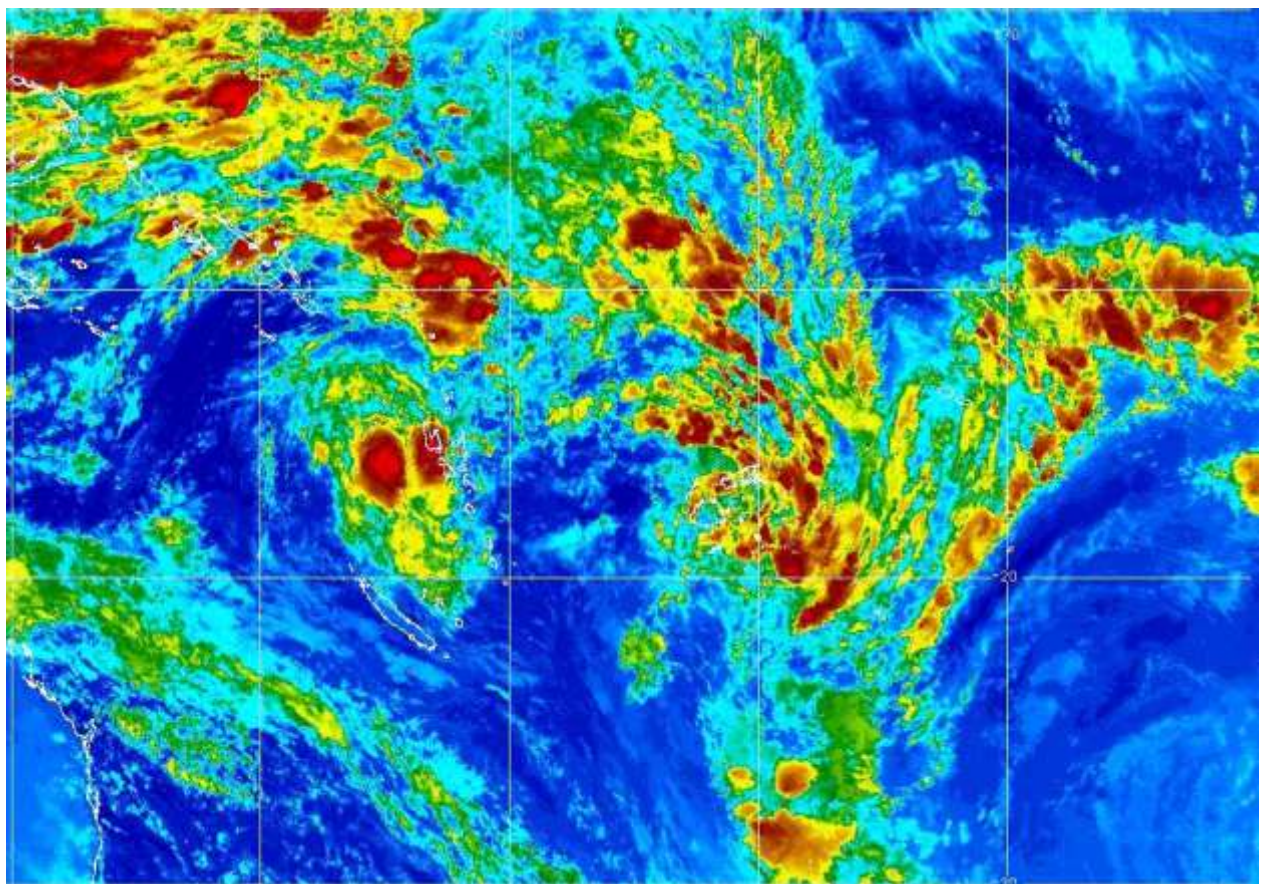


Figure 2: Satellite image at 5.00pm today on 05 February 2018 showing the main cloud band over the eastern and northern parts of Fiji.

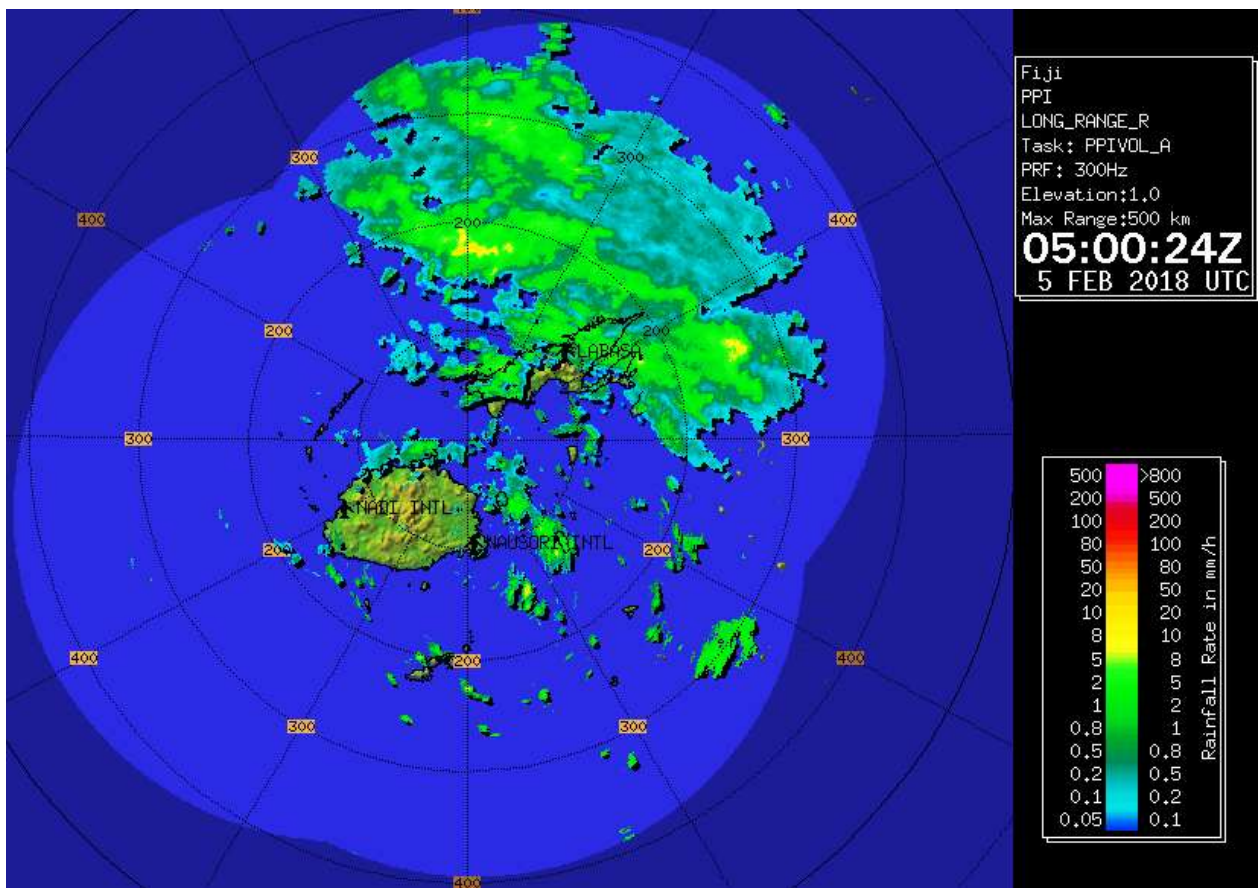


Figure 3: Radar Image at 5pm today 05 February 2018 showing heavy rain over Vanua Levu.

STATION	Significant Rainfall at Selected Sites (9am yesterday to 9am today)
Nabouwalu	185mm
Seaqaqa	109mm
Wainikoro	102mm
Nacocolevu	67mm
Keiyasi	66mm
Udu Point	64mm
Nadi Airport	56mm
Saqani	53mm
Dreketilailai- Labasa	53mm
Labasa Airport	53mm

Table 1: Significant rainfall recorded at selected station from 9am yesterday to 9am this morning.

Rewa Catchment	Threshold Level		RF 2pm– 3pm	WL 3pm	Remarks
	Alert (m)	Warning (m)			
<i>Nabukaluka</i>	4.0	5.0	Nil	1.16	Decreasing
<i>Navolau</i>	6.0	8.0	Nil	-	Decreasing
<i>Waimanu</i>	4.0	5.0	5.0	2.06	Decreasing
<i>Nayavu</i>	5.0	8.0	-	0.97	Decreasing
<i>Naqali</i>	2.5	3.5	Nil	0.71	Decreasing
<i>Nairukuruku</i>	4.0	5.0	Nil	1.76	Decreasing
Navua Catchment	Alert (m)	Warning (m)			
<i>Sabata</i>	4.0	6.0	Nil	1.71	Decreasing
<i>Nabukelevu</i>	3.0	4.0	Nil	1.64	Decreasing
Rakiraki Catchment	Alert (m)	Warning (m)			
<i>Rakiraki Town</i>	1.5	2.5	-	0.46	Normal
<i>Vatukacevaceva</i>	1.0	1.5	Nil	0.80	Decreasing
Sigatoka Catchment	Alert (m)	Warning (m)			
<i>Keiyasi</i>	4.0	5.0	Nil	1.74	Decreasing
<i>Sigatoka Bridge</i>	3.5	4.5		0.80	Normal
<i>Bukuya Rainfall</i>			1.5		3 Hour Rainfall
Semo Catchment	Alert (m)	Warning (m)			
<i>Tuva</i>	3.5	4.5	3.0	3.07	Decreasing
<i>Ciri</i>	1.5	2.5		2.33	Decreasing
Nadi Catchment	Alert (m)	Warning (m)			
<i>Nadi Bridge</i>	2.5	3.5	-	1.68	Decreasing
<i>Votuavevu</i>	3.0	5.0	-	2.20	Decreasing
<i>Yavuna</i>	3.5	4.5	-	0.43	Normal
<i>Mulomulo</i>	3.0	4.0	-	0.93	Normal
Ba Catchment	Alert (m)	Warning (m)			
<i>FSC Ba</i>	2.0	3.5	-	1.79	Decreasing
<i>Toge</i>	4.0	6.0	Nil	1.97	Decreasing
<i>Nanoko Rainfall</i>			0.5		3 Hour Rainfall
Tavua Catchment					
<i>Nasivi W/L</i>	2.5	3.5	-	1.35	Decreasing
<i>Waikubukubu</i>			Nil		3 Hour Rainfall
Labasa Catchment	Alert (m)	Warning (m)			
<i>Dewala</i>	2.5	4.0	0.5	1.01	Normal
<i>Labasa Town</i>	2.0	2.5	-	0.38	Normal
<i>Dreketilailai</i>	2.5	3.5	0.5	1.65	Decreasing
<i>Nayarabale</i>			0.5	-	3 Hour Rainfall
<i>Qawa Bridge</i>	3.0	4.5	0.5	-	3 Hour Rainfall

Table 2: Water level in major rivers is either normal or decreasing at majority of water level monitoring sites.