



**FUJI METEOROLOGICAL SERVICES
GOVERNMENT OF THE REPUBLIC OF FUJI**

MEDIA RELEASE No.25

4pm, Saturday 03 February 2018

RAIN CONTINUES AND HEAVY RAIN WARNING REMAINS

Heavy rain being experienced in parts of the country as a weak tropical low-pressure system remains slow moving over Fiji. The associated active trough of low pressure, cloud and rain continues to affect the country.

Within the trough, two low-pressure systems have developed, one near Rotuma and the other near Solomon Islands. The low-pressure system near Rotuma is gradually moving towards the group and expected to bring more rain and possibly fresh to strong winds, gusting at times from later tomorrow over the northern and eastern parts of the country. The system near Solomon islands is anticipated to move towards the group and affect during the week.

While there is a possibility of these systems to intensify into a Tropical Disturbance and even into a Tropical Depression over Fiji Waters, the chances of a Tropical Cyclone developing over next three days remain low.

With more rain predicted in the coming days, the following *Warnings* and *Alerts* remain in force:

1. A “**Heavy Rain Warning**” remains in force for whole of Fiji.
2. A “**Strong Wind Warning**” is now in force for the Land Areas and Waters of Rotuma.
3. A “**Strong Wind Warning**” remains in force for Vanua Levu Waters, Northern Lau Waters and Vatu-i-ra passage.
4. A “**Flood Alert**” is now in force for low-lying areas, streams and tributaries adjacent to major rivers of Fiji.

Expect periods of rain, heavy at times and a few thunderstorms over Vanua Levu, Lomaiviti and Lau Groups tonight and tomorrow. Winds are expected to gradually increase from moderate to fresh and possibly become strong and gusty at times in these areas. Over Rotuma, expect occasional rain and strong north to northwest winds 40km/hr to 55km/hr and gusting to 60km/hr.

For the rest of Fiji, expect occasional rain, thunderstorms, becoming frequent and heavy from with moderate to fresh winds, and gusting in thunderstorms. Rain easing temporarily before another spell of wetter conditions returns as low-pressure system near Solomon Islands draws closer to the Group.

With ground already saturated and more rain will cause the water levels in the streams and rivers to gradually raise and thus the chance of flooding remains high.

The weather conditions and river levels are closely monitored and public will be appropriately advised through alert and warning as the situation worsens or improves. All communities are advised to remain prepared, be updated with the latest weather information and take alerts and warnings seriously as and when it is issued.

For more details and the latest on weather, please contact the National Weather Forecasting Centre on 6736006, 9905376 or visit the Fiji Meteorological Service's website, www.met.gov.fj. For Heavy Rain Warning: http://www.met.gov.fj/aifs_prods/20014.txt. For Flood Alert: http://www.met.gov.fj/aifs_prods/20016.txt.

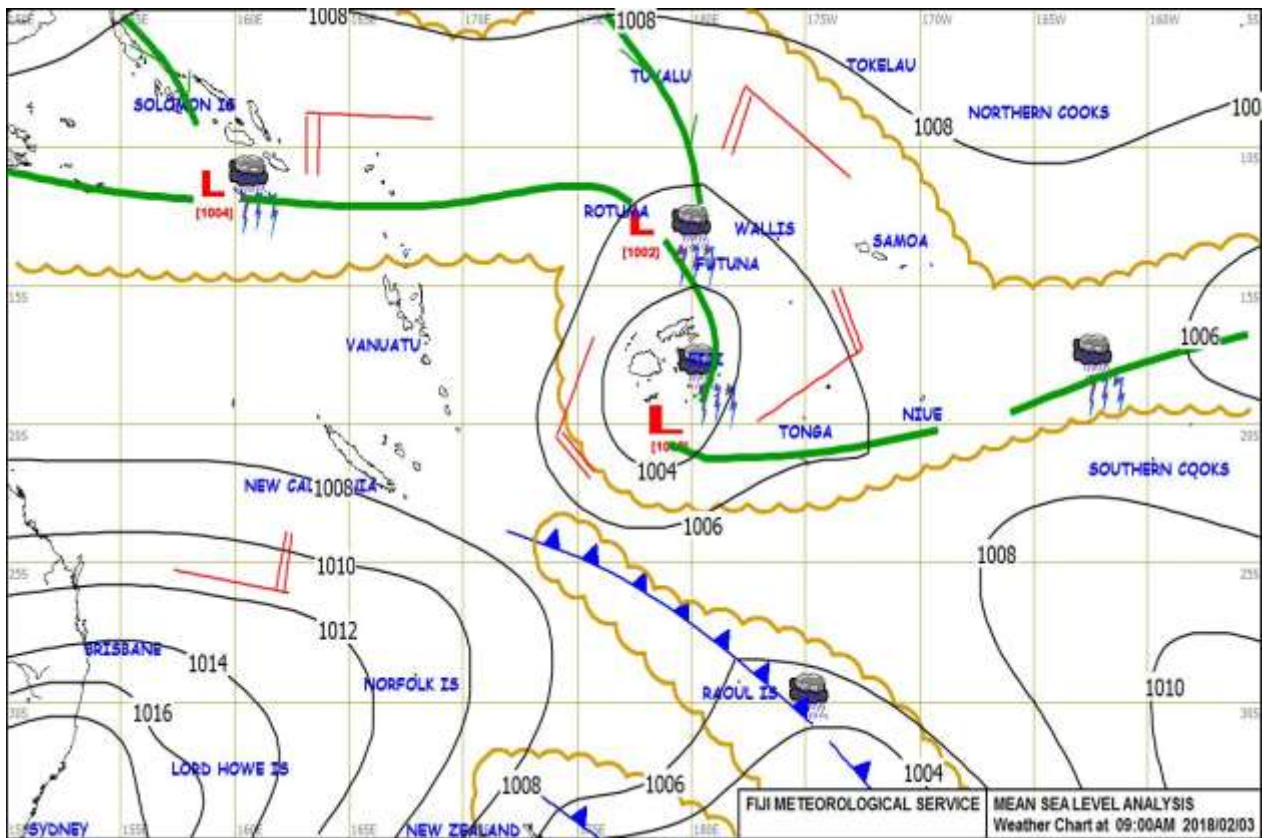


Figure 1: Mean Sea Level Weather Map at 9am on 03 February 2018 with a tropical low analysed over Fiji and another low-pressure system near Rotuma.

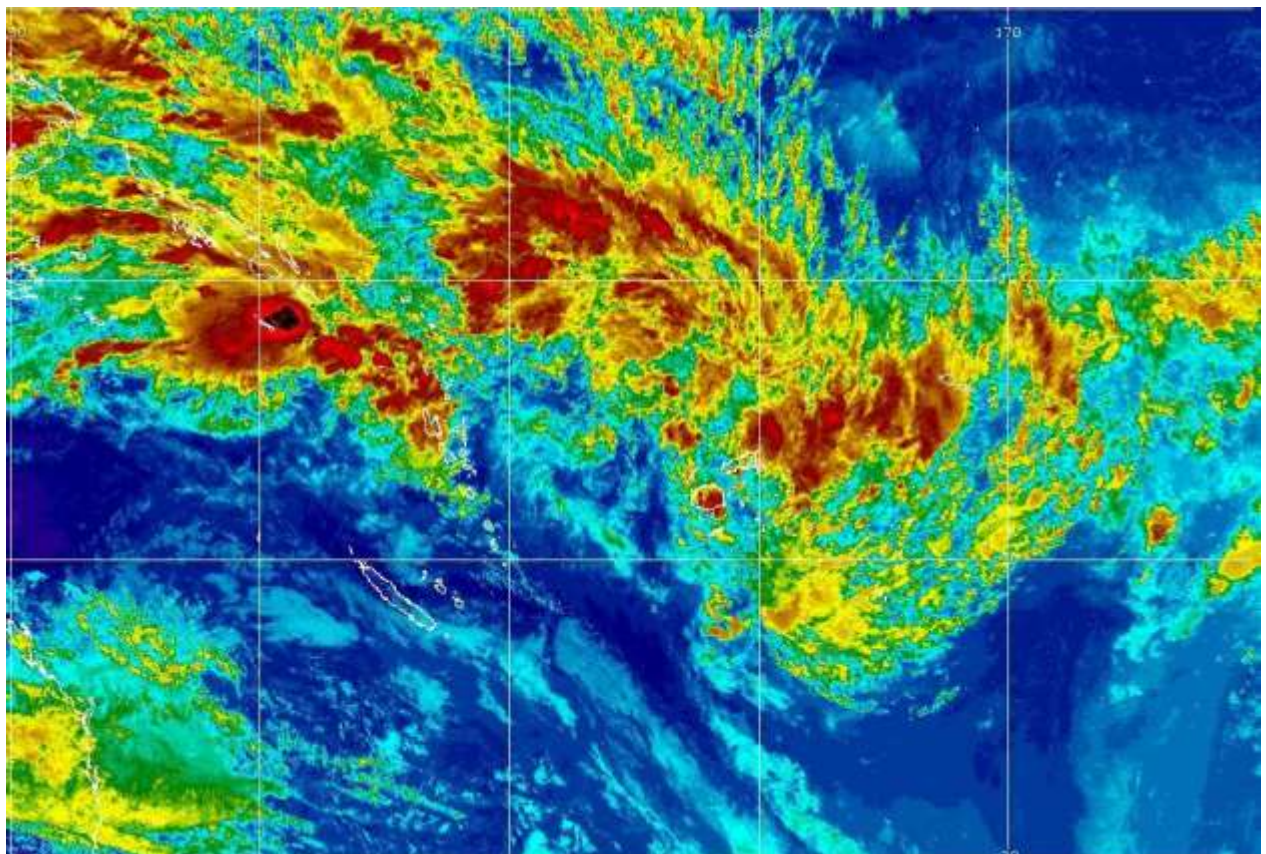


Figure 2: Satellite image at 2.00pm today on 03 February 2018.

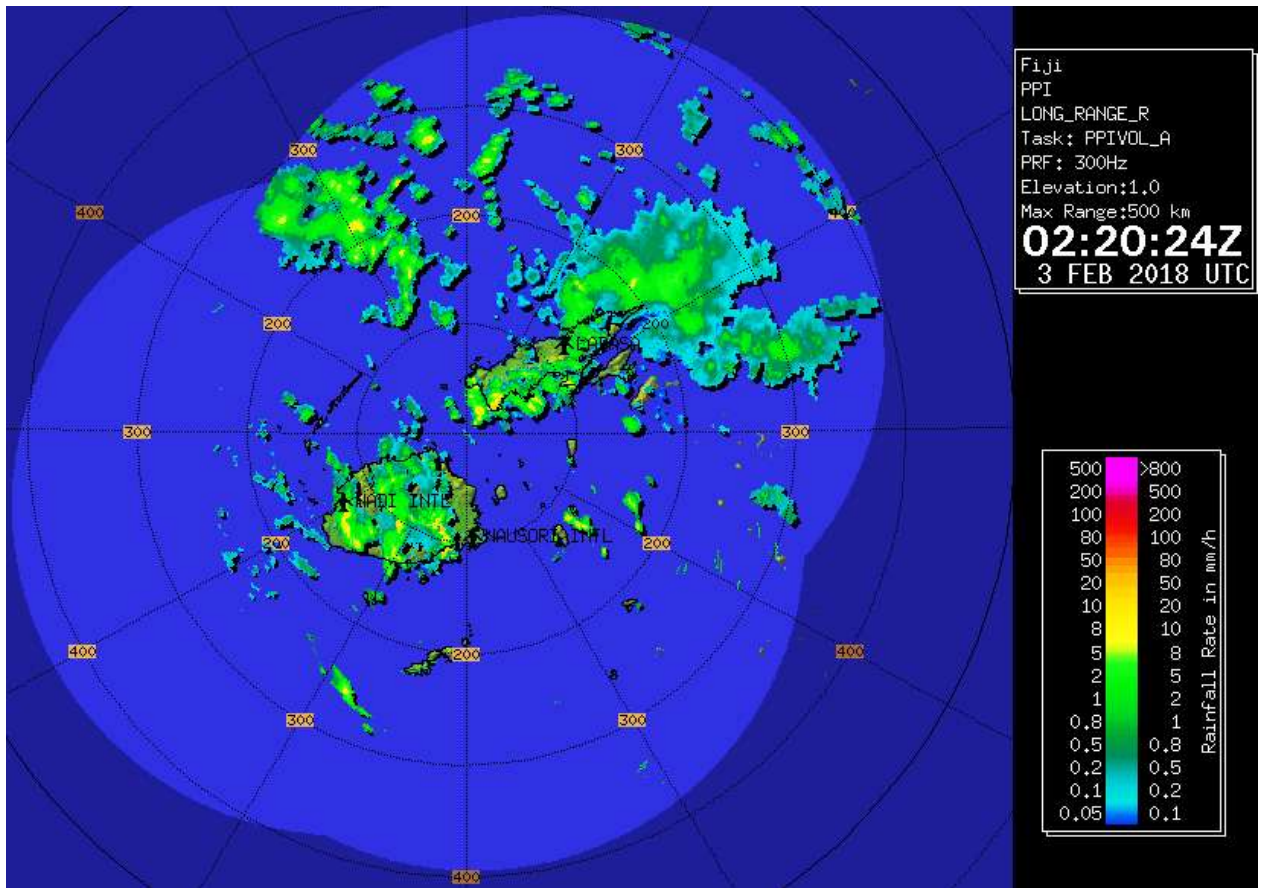


Figure 3: Radar Image at 1pm today on 02 February 2018.

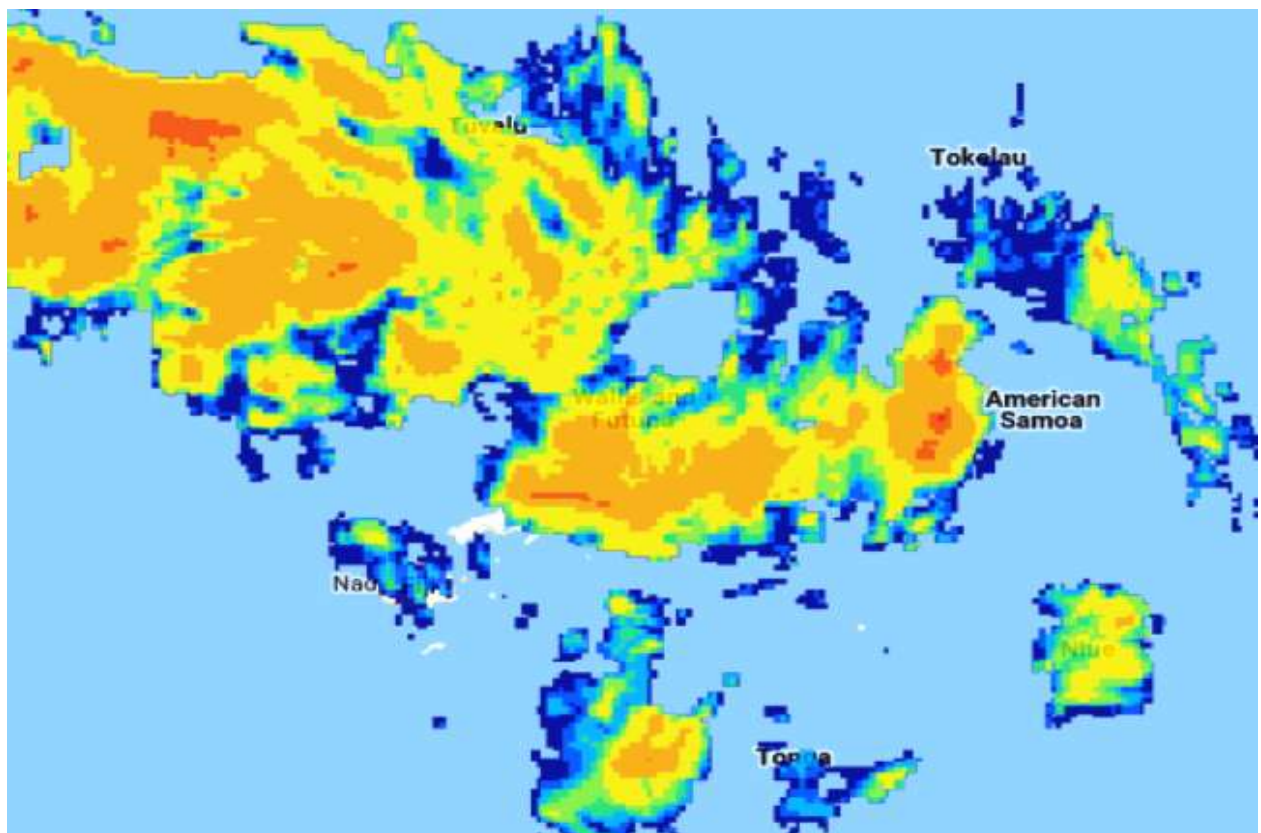


Figure 4: Satellite image of estimated rainfall in the range of 5 to 10mm/hr or more can be expected in heavy rain.

| STATION | Significant Rainfall at Selected Sites (9am yesterday to 9am today) |
|--------------------|--|
| Wainikoro (Labasa) | 139mm |
| Toge (Ba) | 137mm |
| Bukuya | 122mm |
| Sigatoka | 90mm |
| Nanoko | 85mm |
| Nadarivatu | 59mm |
| Waikubukubu (Rewa) | 53mm |

ENDS.