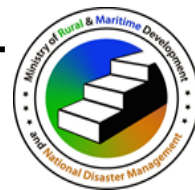




MINISTRY OF RURAL & MARITIME DEVELOPMENT, NATIONAL DISASTER MANAGEMENT & METEOROLOGICAL SERVICES



MEDIA RELEASE No.10

4pm, Saturday 23 December 2017

HEAVY RAIN AND STRONG WINDS TO EASE OVER MOST PLACES

Tropical Depression (TD04F) with a central pressure of 998HPA was located near 17.7 degrees latitude and 173.7 degrees longitude or about 400 kilometres west of Nadi at 3pm this afternoon.

It is moving south-southeast at about 18km/hr towards less favourable environmental conditions. It is expected to encounter strong winds and cooler sea surface temperatures thus weakening its potential for further intensification and chance of developing into a tropical cyclone is *low*.

Associated trough, cloud, rain and strong winds continue to affect the northern and eastern parts of Fiji and the following warning remains in force:

1. “***A Heavy Rain Warning***” remains in force for Kadavu, Vanua Levu, Taveuni and nearby smaller islands, Lomaiviti and Lau Groups but cancelled for Viti Levu, Yasawa and Manacuca Group;
2. “***A Strong Wind Warning***” remains in force for all Fiji Waters including Rotuma; and
3. “***A Strong Wind Warning***” remains in force for Lands areas of Fiji excluding Rotuma.

Weather has started to improve from the west, however expect occasional rain over most places tonight with isolated heavy rainfall especially in the northern and the eastern parts and easing to showers later tomorrow. Squally thunderstorms can be expected in isolated rainbands.

The likelihood of flash flooding of low-lying areas remains in the northern and eastern parts of the country in localised heavy rain.

Fresh to strong northerly winds are expected over land to affect most of Fiji and gradually ease to moderate to fresh tomorrow. However, hot and humid conditions may prevail in coming days.

Over the Waters, expect north-easterly winds 20 to 25 knots, gusty at times with rough seas to very rough seas and moderate southeast swells.

The situation is closely monitored and subsequent updates will be released as any rapid changes in the situation are expected. All communities are advised to remain vigilant and keep updated with the latest weather information.

For more details and the latest on weather, please contact the National Weather Forecasting Centre on 6736006, 9905376 or visit the Fiji Meteorological Service’s website, www.met.gov.fj or direct link for Fiji Heavy Rain Alert/Warning http://www.met.gov.fj/aifs_prods/20014.txt or Public Weather Bulletin http://www.met.gov.fj/aifs_prods/10040.txt.

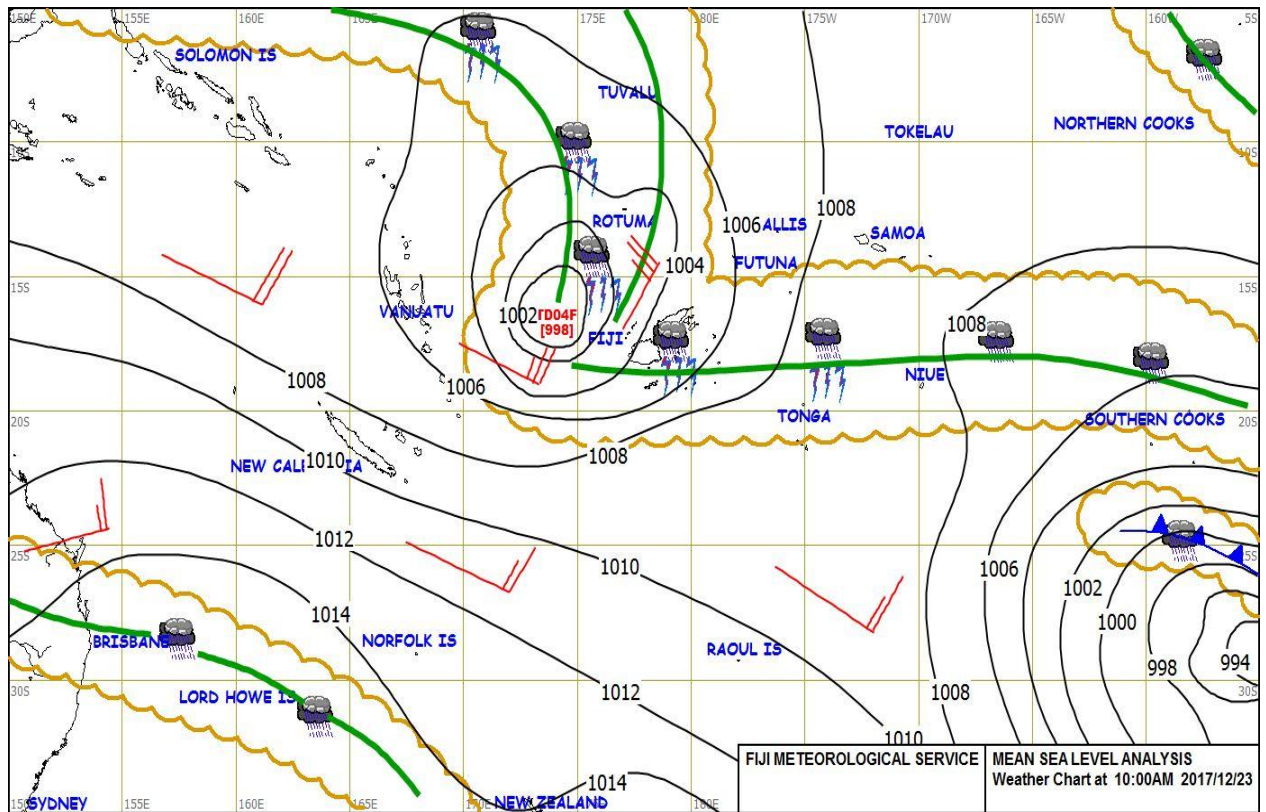


Figure 1: Weather Map at 10am today on 23 December 2017.

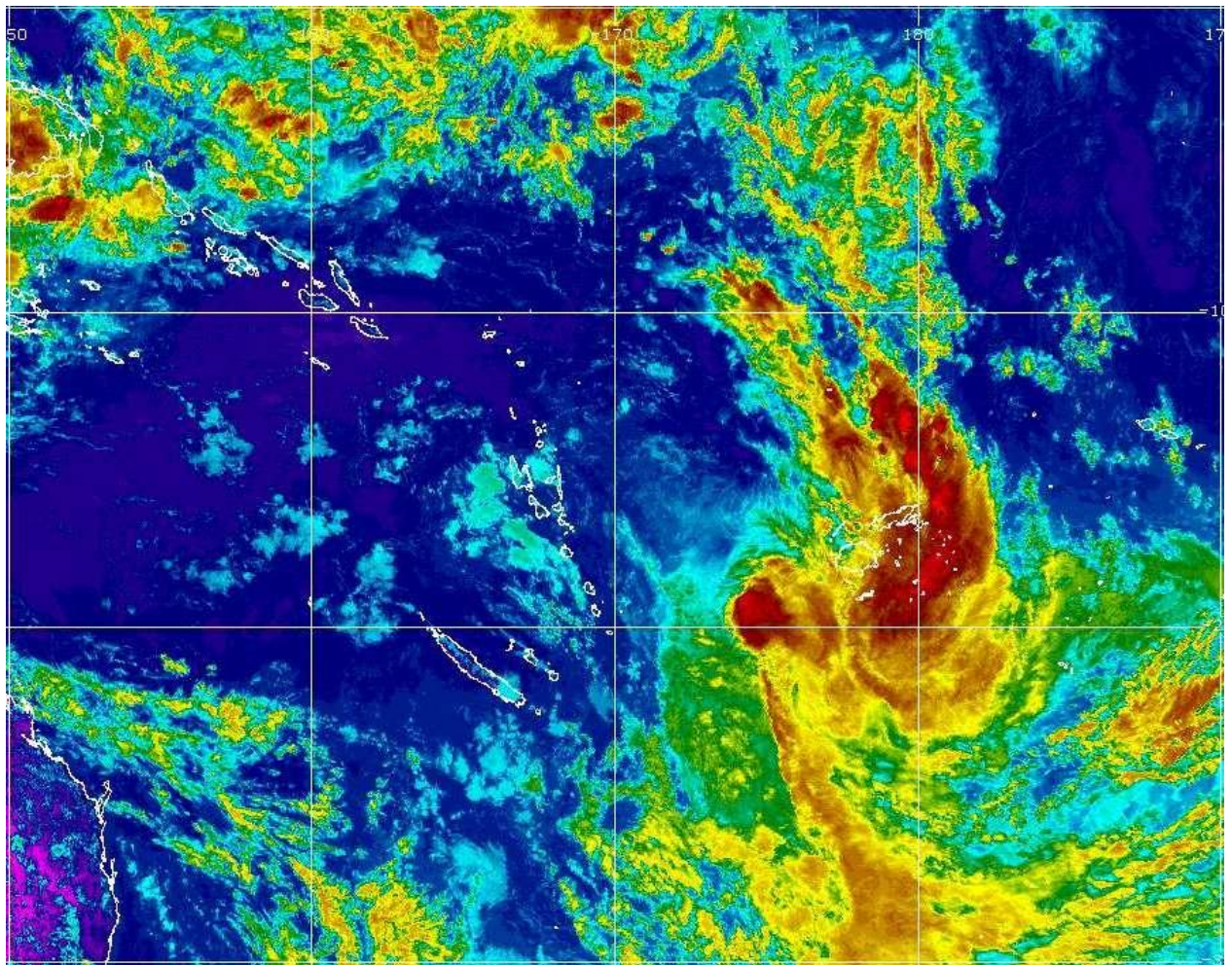


Figure 2: Satellite image at 2pm on 23 December 2017.

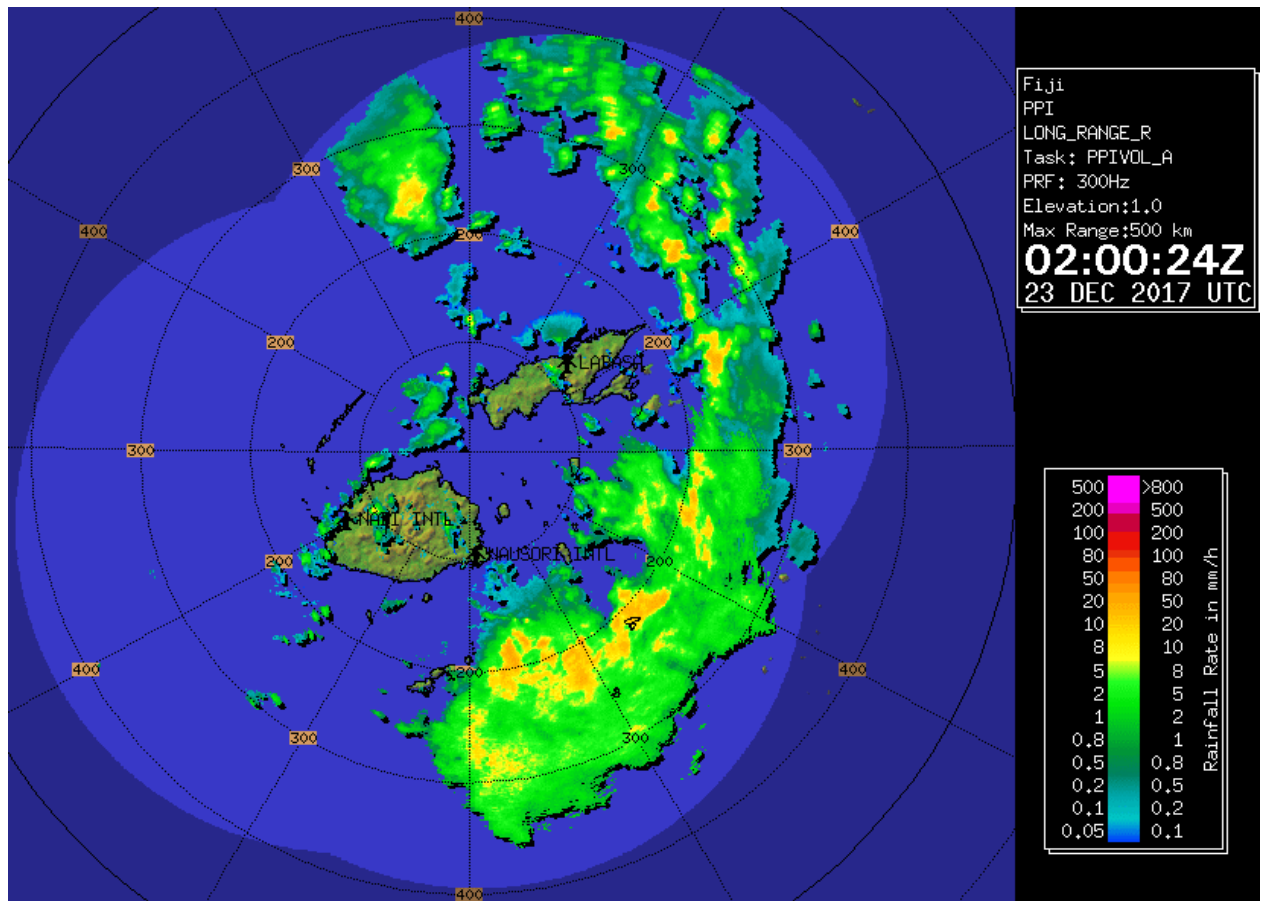


Figure 3: Radar image at 2pm on 23 December 2017.

Stations	Significant Rainfall Recorded
Nabukaluka	83mm
Naqali	75mm
Tokotoko	74mm
Waimanu	73mm
Navolau	70mm
Yasawa	60mm
Nairukuruku	59mm
Sabata	54mm

Table 1: Significant rainfall recorded at selected sites.

ENDS.